

CAST STEEL VALVES



YONEKI VALVES



www.upcc.com.ph

FIGURE NUMBER INDEX ABBREVIATIONS

(1) VALVE TYPE	(2) RATING	(3) BONNET TYPE	(4) END CONNECTION	(5) SEAT CONSTRUCTION	(6) TRIM MATERIAL	(7) OPERATOR (OPTION)
GA: Gate	01: 150*	0: B.B.	F: F.F.	A: Renewable Seat	See TABLE 1	A: Air Motor
FG: Full Port Gate	03: 300*	1: B.B.Ext. type 1	G: Grayloc	B: Integral Seat		B: Bevel Gear
VG: Venturi Gate	04: 400*	2: B.B.Ext. type 2	J: RTJ	C: Welded Seat		C: Chain Wheel
ND: Needle Globe	06: 600*	3: B.B.Ext. type 3	L: T & G	D: Renewable W/Teflon		D: Hammer Blow
AN: Angle Needle Globe	09: 900*	4: P.Seal	M: M & F	E: Integral W/Teflon		E: Electric Motor
YN: Y-Needle Globe	15: 1500*	5: P.Seal Ext.	R: R.F.	N: Renewable Bellows		H: Hydraulic Actuator
GL: Plug type Globe	20: 2000**	6: Grayloc	S: S.W.	P: Integral Bellows		P: Pneumatic Actuator
AG: Plug type Angle Globe	25: 2500*	9: Other	T: Screwed	Q: Welded Bellows		S: Spur Gear
YG: Plug type Y-Globe	45: 4500*		W: B.W.	Z: Other		W: Worm Gear
YG: Plug type Y-Globe	50: 5000**		X: BW & RF			Z: Other
BG: Ball type Globe	*ANSI		Y: BW & RTJ			
BA: Ball type Angle Globe	**API		Z: Other			
BY: Ball type Y-Globe						
ST: Stop Check						
AS: Angle Stop Check						
YS: Y-Stop Check						
SC: Swing Check						
FS: Full Open Swing Check						
TC: Tilting Check						
TY: Yonaki type Tilting Check (One piece Body)						
LC: Lift Check						
YL: Y-Lift Check						
AL: Angle Lift Check						

NOTE 1: (3) BONNET TYPE

1. B.B. Ext. type 1 means for -50°C max. (LCB & LCC)
2. B.B. Ext. type 2 means for -149°C max. (LC3 & S. Steel)
3. B.B. Ext. type 3 means for -200°C max. (Cryogenic service)

NOTE 2: (6) TRIM MATERIAL

Trim nos. 01 thru 14 are exactly the same trim nos. as API STD. 600.

NOTE 3: (7) OPERATOR (OPTION)

This column will be left blank if a standard handwheel operator is required.

NOTE 4: BODY/BONNET MATERIAL

1. Must be indicated in () at the tail of Fig. No.
2. Not necessary to indicate in case of WCB.
3. NACE (Other special requirement), if required, is also indicated in () followed to Body/Bonnet material.

For Example: GA154WC-05-B (WC6)	
Gate Valve	GA
1500LB Class	15
Pressure Seal (Std.)	4
Butt Weld Ends	W
Welded Seat	C
Stellite Seat & Disc/13Gr. Trim	05
Bevel Gear Operator	B
Body/Bonnet Material	(WC6)

QUALITY ASSURANCE

OUR QUALITY ASSURANCE SYSTEM HAS BEEN VERY EFFECTIVE. AS WE HAVE GAINED THE REPUTATION FOR PRODUCING VERY HIGH QUALITY VALVES. OUR CUSTOMERS HAVE THE CONFIDENCE IN KNOWING THAT NO VALVE WILL BE SHIPPED FROM OUR FACTORY UNTIL IT HAS UNDERGONE THE MOST STRINGENT QUALITY CONTROL, TESTING, AND INSPECTION PROCEDURES.

WE HAVE THE CAPABILITY TO PERFORM ALL POSSIBLE NON-DESTRUCTIVE TESTS INCLUDING RADIOGRAPHIC, MAGNETIC PARTICLE, ULTRA-SONIC, AND LIQUID PENETRANT EXAMINATIONS.

OUR METALLURGISTS AND MECHANICAL ENGINEERS ARE CONSTANTLY TRYING TO DEVELOP NEW AND IMPROVED TECHNOLOGY. SO WE CAN ALWAYS OFFER THE HIGHEST QUALITY VALVES PRODUCED IN THE WORLD. OUR RESEARCH PERSONNEL HAVE AVAILABLE A WIDE RANGE OF MODERN EQUIPMENT TO CARRY OUT THEIR RESEARCH.



PRESSURE-TEMPERATURE RATINGS (ASME B16.34-1996)

CLASS 150

Pressures are in pounds per square inch (psig.)

Materials	Carbon Steel			Carbon -1/2Mo	1 1/4Cr -1/2Mo	2 1/4Cr -1Mo	5Cr -1/2Mo	18Cr-8Ni	18Cr -9Ni -2Mo	18Cr -10Ni -Ti	18Cr -10Ni -Cb
	A216 WCB	A216 WCC		A217 WC1	A217 WC6	A217 WC9	A217 C5	A351 CF8	A351 CF8M		A351 CF8C
Temperature Deg.F.	A105	A352 LCC	A352 LCB	A182 F1	A182 F11 Cl.2	A182 F22 Cl.3	A182 F5,F5a	A351 CF3	A351 CF3M	A182 F321 F321H	A182 F347 F347H
	A350 LF2	A352 LC2,LC3		A352 LC1	A182 F12 Cl.2			A182 F304 F304H	A182 F316 F316H		
-20 to 100	285	290	265	265	290	290	290	275	275	275	275
200	260	260	250	260	260	260	260	230	235	245	255
300	230	230	230	230	230	230	230	205	205	230	230
400	200	200	200	200	200	200	200	190	190	200	190
500	170	170	170	170	170	170	170	170	170	170	170
600	140	140	140	140	140	140	140	140	140	140	140
650	125	125	125	125	125	125	125	125	125	125	125
700	110	110	110	110	110	110	110	110	110	110	110
750	95	95	95	95	95	95	95	95	95	95	95
800	80	80	80	80	80	80	80	80	80	80	80
850	65	65	65	65	65	65	65	65	65	65	65
900	50	50	50	50	50	50	50	50	50	50	50
950	35	35	35	35	35	35	35	35	35	35	35
1,000	20	20	20	20	20	20	20	20	20	20	20
1,050					20(1)	20(1)	20(1)	20(1)	20(1)	20(1)	20(1)
1,100					20(1)	20(1)	20(1)	20(1)	20(1)	20(1)	20(1)
1,150					20(1)	20(1)	20(1)	20(1)	20(1)	20(1)	20(1)
1,200					15(1)	20(1)	15(1)	20(1)	20(1)	20(1)	20(1)
1,250								20(1)	20(1)	20(1)	20(1)
1,300								20(1)	20(1)	20(1)	20(1)
1,350								20(1)	20(1)	20(1)	20(1)
1,400								20(1)	20(1)	20(1)	20(1)
1,450								15(1)	20(1)	20(1)	15(1)
1,500								10(1)	20(1)	20(1)	15(1)
Hydrostatic Shell Test Press.	450	450	400	400	450	450	450	425	425	425	425
Hydrostatic Seat Test Press.	314	319	292	292	319	319	319	303	303	303	303
Hydrostatic Seat Test Press.	80										

NOTES:

- (1) For welding end valves only.
Flanged end rating terminate at 1,000° F (540°C).
- (2) This pressure-temperature rating table shall be applied to STANDARD CLASS VALVES of flanged and butt welding ends type.
- (3) With regards to service temperature limit for each material and other conditions.
Please refer to the TABLE 2 "LIST OF MATERIAL SPECIFICATIONS" in the accompanying sheet.

PRESSURE-TEMPERATURE RATINGS

(ASME B16.34-1996)

CLASS 300

Pressures are in pounds per square inch (psig.)

Materials	Carbon Steel			Carbon -1/2Mo	1 1/4Cr -1/2Mo	2 1/4Cr -1Mo	5Cr -1/2Mo	18Cr-8Ni	18Cr -9Ni -2Mo	18Cr -10Ni -Ti	18Cr -10Ni -Cb
	A216 WCB	A216 WCC		A217 WC1	A217 WC6	A217 WC9	A217 C5	A351 CF8	A351 CF8M		A351 CF8C
	A105	A352 LCC	A352 LCB	A182 F1	A182 F11 Cl.2	A182 F22 Cl.3	A182 F5,F5a	A351 CF3	A351 CF3M	A182 F321 F321H	A182 F347 F347H
	A350 LF2	A352 LC2,LC3		A352 LC1	A182 F12 Cl.2			A182 F304 F304H	A182 F316 F316H		
Temperature Deg.F.		A350 LF3									
-20 to 100	740	750	695	695	750	750	750	720	720	720	720
200	675	750	655	680	750	750	745	600	620	645	660
300	655	730	640	655	720	730	715	540	560	595	615
400	635	705	620	640	695	705	705	495	515	550	575
500	600	665	585	620	665	665	665	465	480	515	540
600	550	605	535	605	605	605	605	435	450	485	515
650	535	590	525	590	590	590	590	430	445	480	505
700	535	570	520	570	570	570	570	425	430	465	495
750	505	505	475	530	530	530	530	415	425	460	490
800	410	410	390	510	510	510	510	405	420	450	485
850	270	270	270	485	485	485	485	395	420	445	485
900	170	170	170	450	450	450	370	390	415	440	450
950	105	105	105	280	320	375	275	380	385	385	385
1,000	50	50	50	165	215	260	200	320	350	355	365
1,050					145	175	145	310	345	315	360
1,100					95	110	100	255	305	270	325
1,150					60	70	60	200	235	235	275
1,200					40	40	35	155	185	185	170
1,250								115	145	140	125
1,300								85	115	110	95
1,350								60	95	85	70
1,400								50	75	65	55
1,450								35	60	50	40
1,500								25	40	40	35
Hydrostatic Shell Test Press.	1,125	1,125	1,050	1,050	1,125	1,125	1,125	1,100	1,100	1,100	1,100
Hydrostatic Seat Test Press.	814	825	765	765	825	825	825	792	792	792	792
Hydrostatic Seat Test Press.	80										

NOTES:

- (1) This pressure-temperature rating table shall be applied to STANDARD CLASS VALVES of flanged and buttwelding ends type.
- (2) With regards to service temperature limit for each material and other conditions. Please refer to the TABLE 2 "LIST OF MATERIAL SPECIFICATIONS" in the accompanying sheet.

YONEKI”

Cast Steel Gate Valve

Class 150 - 300 - 600 - 900

**OS & Y (Rising Stem) Bolted Bonnet
Flanged Type API/ANSI Std.**



YONEKI VALVE

ANSI 150 CAST STEEL GATE VALVE BOLTED BONNET O.S. & Y.

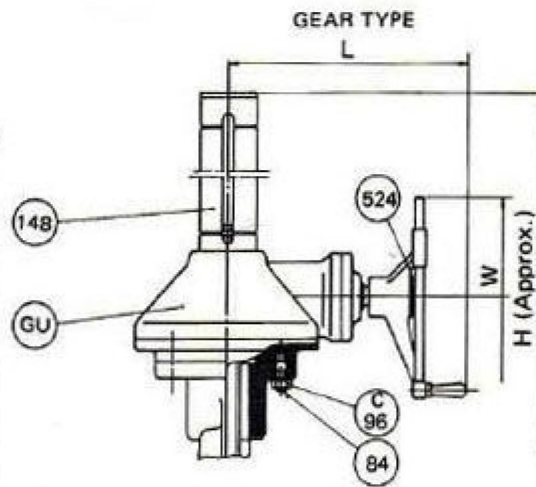
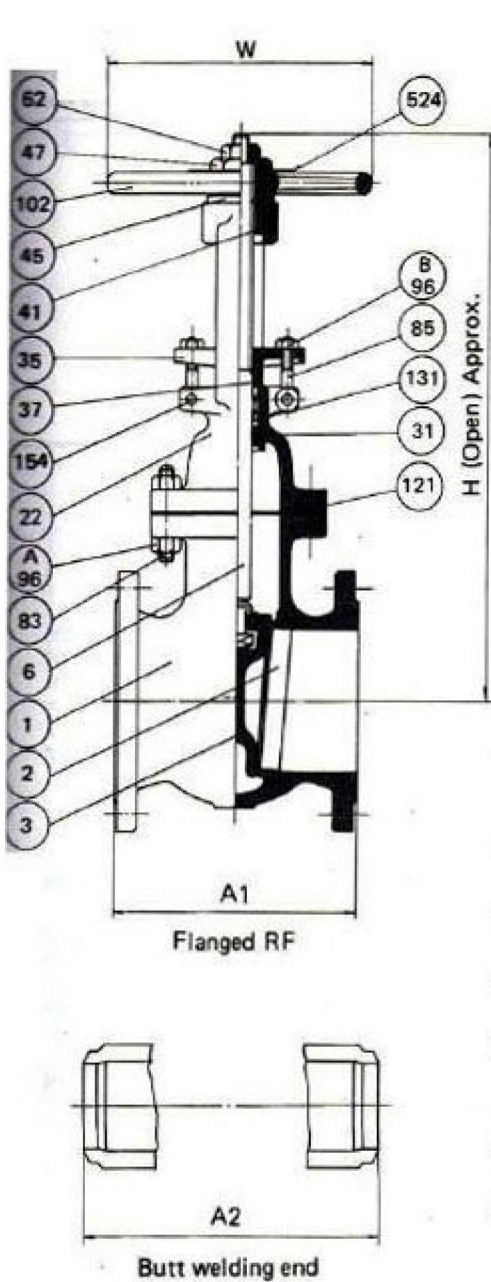


Figure No.

GA010RA	150 lb Gate RF
GA010WA	150 lb Gate Weld

1
BOLTED BONNET
GATE VALVES

■ Features

- End to end dimensions and Wall thicknesses conform to ANSI and API specifications.
- 8 in. and smaller Valves have a one piece Bonnet and Yoke design.
- 10 in. and larger Valves have a two piece Bonnet and Yoke design.
- 4 in. and smaller Valves have a plain solid Wedge.
- 5 in. and larger Valves have a one piece flexible Wedge.
- 2 in. Valves have a square Bonnet flange.
- 2-1/2 in. and larger Valves have an oval type Bonnet flange.
- Gear operator can be furnished upon request.
- Flange dimensions;
24 in. and smaller Valves conform to ANSI B16.5.
26 in. and larger Valves conform to API 605.

Material Specifications Trim No. 8

NO.	PART NAME	MATERIAL
GU	Bevel Gear Unit	Cast Iron + etc
524	Name Plate	18Cr-8Ni S. Steel
154	Eye Bolt Pin	13% Cr. S. Steel
148	Stem Cap	Carbon Steel
131	Packing	*3
121	Gasket	*2
102	Handwheel	Nodular Iron
96C	Yoke Bolt Nut	ASTM A194 Gr.2H
96B	Eye Bolt Nut	ASTM A194 Gr.2H
96A	Bonnet Bolt Nut	ASTM A194 Gr.2H
85	Eye Bolt	ASTM A193 Gr.B7
84	Yoke Bolt	ASTM A193 Gr.B7
83	Bonnet Bolt	ASTM A193 Gr.B7
62	Stopper	Carbon Steel
47	Lock Nut	Carbon Steel
45	Sleeve Nut	Carbon Steel
41	Yoke Sleeve	Al-Bronze
37	Gland	ASTM A182 Gr.F6a
35	Gland Flange	Carbon Steel
31	Bonnet Bush	ASTM A182 Gr.F6a
22	Bonnet Yoke	ASTM A216 Gr.WCB
6	Stem	ASTM A182 Gr.F6a
3	Wedge	ASTM A182 Gr.F6a *1
2	Body Seat Ring	ASTM A105 + STL
1	Body	ASTM A216 Gr.WCB

- Note *1 6 in. & 8 in. ASTM A217 Gr. CA15
10 in. & larger ASTM A216 Gr. WCB + 13% Cr. deposit
- *2 Compressed asbestos or Corrugated metal
- *3 Inconel wire reinforced asbestos braided packing

Dimensions (in./mm)

Nom. Size	in.	2	2-1/2	3	4	5	6	8	10	12	14	16	18	20	24	26	28	30	36	40	42	48
A1	in.	2	2-1/2	3	4	5	6	8	10	12	14	16	18	20	24	26	28	30	36	40	42	48
A2	in.	8-1/2	9-1/2	11-1/8	12	15	15-7/8	16-1/2	18	19-3/4	22-1/2	24	26	28	32	34	36	36	40	42	43	46
H	in.	14-7/8	17-1/2	18-3/4	22-3/4	27-5/8	30-3/8	38	47-1/4	55	60-1/8	68-1/2	81-3/4	89-3/8	105	119-3/8	122-7/8	131-5/8	164-1/4	183-7/8	193-3/4	217-1/2
W	in.	7-2/8	7-7/8	9-7/8	9-7/8	11-13/16	11-13/16	14	15-3/4	19-11/16	22-1/16	23-5/8	18-1/8	18-1/8	24	24	24	24	24	30	30	30
L	in.	-	-	-	-	-	-	-	-	-	-	-	16-13/16	16-13/16	17	20-3/16	20-3/16	20-3/16	20-3/16	21-13/16	21-13/16	21-13/16
RF	lb	37	66	75	106	143	170	265	441	639	816	1036	1323	1654	2040	4190	4631	4410	8489	10617	11687	15678
BW	lb	17	30	34	48	65	77	120	200	290	370	470	600	750	925	1900	2100	2000	3850	4815	5300	7110
	Kg	13	27	28	42	55	65	100	184	265	340	440	550	710	870	1945	2160	2030	3920	4840	5275	7050

YONEKI VALVE

ANSI 300 CAST STEEL GATE VALVE BOLTED BONNET O.S. & Y.

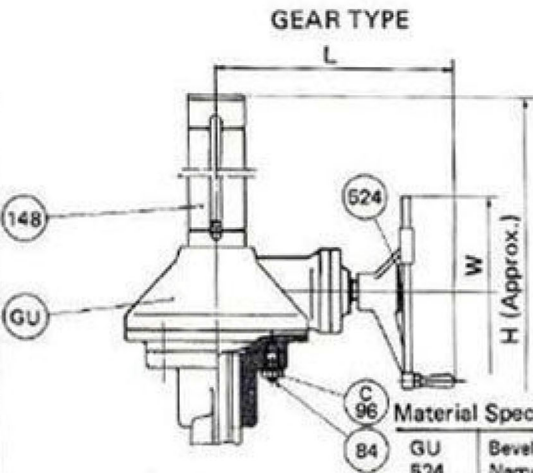
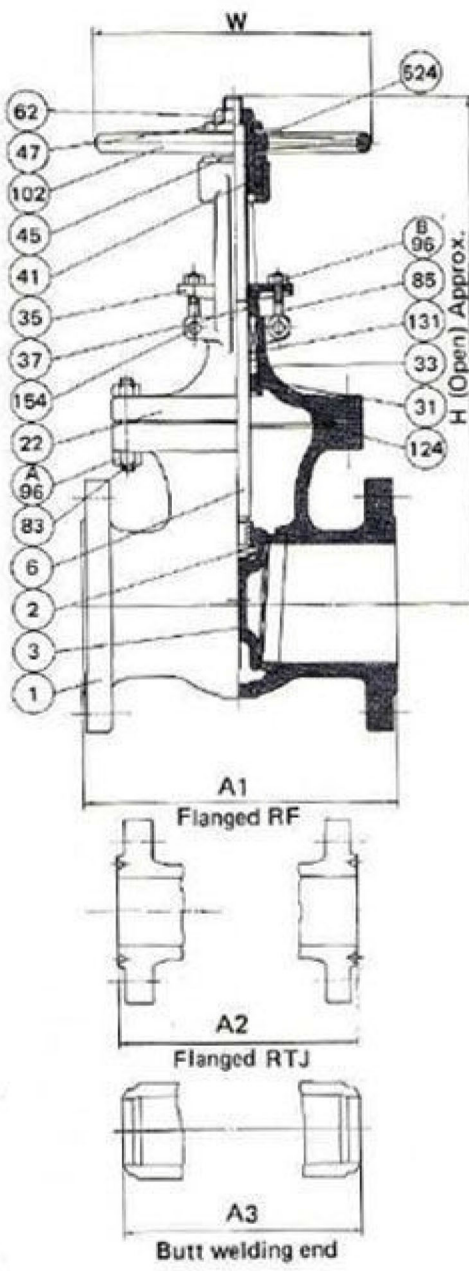


Figure No.

GA030RA	300 lb Gate RF
GA030JA	300 lb Gate RTJ
GA030WA	300 lb Gate Weld

- Features
- End to end dimensions and Wall thicknesses conform to ANSI and API specifications.
- 8 in. and smaller Valves have a one piece Bonnet and Yoke design.
- 10 in. and larger Valves have a two piece Bonnet and Yoke design.
- 4 in. and smaller Valves have a plain solid Wedge.
- 5 in. and larger Valves have a one piece flexible Wedge.
- Gear operator can be furnished upon request.
- Flange dimension:
24 in. and smaller Valves conform to ANSI B16.5.
26 in. and larger Valves conform to API 605.

Material Specifications Trim No. 8

NO.	PART NAME	MATERIAL
GU	Bevel Gear Unit	Cast Iron + etc.
524	Name Plate	18Cr-8Ni S. Steel
154	Eye Bolt Pin	13% Cr. S. Steel
148	Stem Cap	Carbon Steel
131	Packing	*3
124	Gasket	*2
102	Handwheel	Nodular Iron
96C	Yoke Bolt Nut	ASTM A194 Gr. 2H
96B	Eye Bolt Nut	ASTM A194 Gr. 2H
96A	Bonnet Bolt Nut	ASTM A194 Gr. 2H
85	Eye Bolt	ASTM A193 Gr. B7
84	Yoke Bolt	ASTM A193 Gr. B7
83	Bonnet Bolt	ASTM A193 Gr. B7
62	Stopper	Carbon Steel
47	Lock Nut	Carbon Steel
45	Sleeve Nut	Carbon Steel
41	Yoke Sleeve	Al-Bronze
37	Gland	ASTM A182 Gr. F6a
35	Gland Flange	Carbon Steel
33	Packing Washer	ASTM A182 Gr. F6a
31	Bonnet Bush	ASTM A182 Gr. F6a
22	Bonnet Yoke	ASTM A216 Gr. WCB
6	Stem	ASTM A182 Gr. F6a
3	Wedge	ASTM A182 Gr. F6a *1
2	Body Seat Ring	ASTM A105 + STL
1	Body	ASTM A216 Gr. WCB

Note *1 6 in. & 8 in. ASTM A217 Gr. CA15
10 in. & larger ASTM A216 Gr. WCB + 13% Cr. deposit

*2 Spiral wound 304 s. steel asbestos filled

*3 Inconel wire reinforced asbestos braided packing

Dimensions (in./mm)

	2	3	4	5	6	8	10	12	14	16	18	20	24	26	28	30	36	40	42	48	
Apex Size	50	65	80	100	125	150	200	250	300	350	400	450	500	600	700	710	900	1000	1050	1200	
A1	9-1/2	9-1/2	11-3/8	12	15	15-7/8	16-1/2	18	19-3/4	20	23	26	29	35	49	53	55	68	76	78	88
A2	9-1/8	10-1/8	11-3/4	12-5/8	15-5/8	16-1/2	17-1/8	18-5/8	20-1/8	20-5/8	23-5/8	26-1/8	29-3/4	35-7/8	50	54	56	69-1/8			
A3	8-1/2	9-1/2	11-1/8	12	15	15-7/8	16-1/2	18	19-3/4	20	23	26	29	35	49	53	55	68	76	78	88
H	16-1/4	16-3/4	19-1/8	22-1/4	26-3/4	31-7/8	39-3/4	45-1/4	55	66-5/8	80-1/8	89-5/8	95-3/4	112-7/8	126	130	148-1/2	169-3/4	188-5/8	198-1/8	217-3/8
W	3-7/8	3-7/8	3-7/8	4-7/8	5-7/8	6-7/8	7-7/8	8-7/8	9-7/8	10-7/8	11-7/8	12-7/8	13-7/8	14-7/8	15-7/8	16-7/8	17-7/8	18-7/8	19-7/8	20-7/8	21-7/8
L	200	200	250	250	300	355	400	500	560	660	810	810	810	810	810	810	810	810	810	810	810
Weight	62	88	104	134	205	281	430	772	1069	1588	2536	3164	4289	5843	8046	9011	9592	13104	18524	20948	27342
	28	40	47	70	120	170	295	530	720	1150	1435	1945	2650	3150	3660	4350	4850	6460	9100	12400	16845
	31	72	79	132	224	224	224	562	576	1477	2265	2602	3638	4881	5791	6637	7629	11005	15583	14994	19845
	73	35	36	60	100	106	147	255	380	670	1000	1180	1650	2200	2590	3010	3460	4990	6160	6880	9060

YONEKI”

Cast Steel Globe Valve

Class 150 - 300 - 600 - 900

**Bolted Bonnet Flanged Type
API/ANSI Std.**



YONEKI VALVE

ANSI 150 CAST STEEL GLOBE VALVE BOLTED BONNET O.S. & Y.

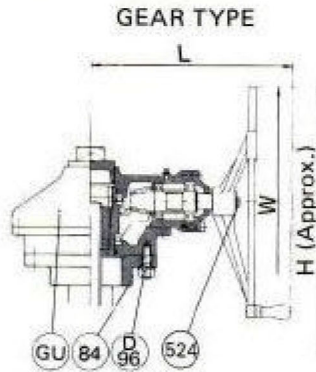
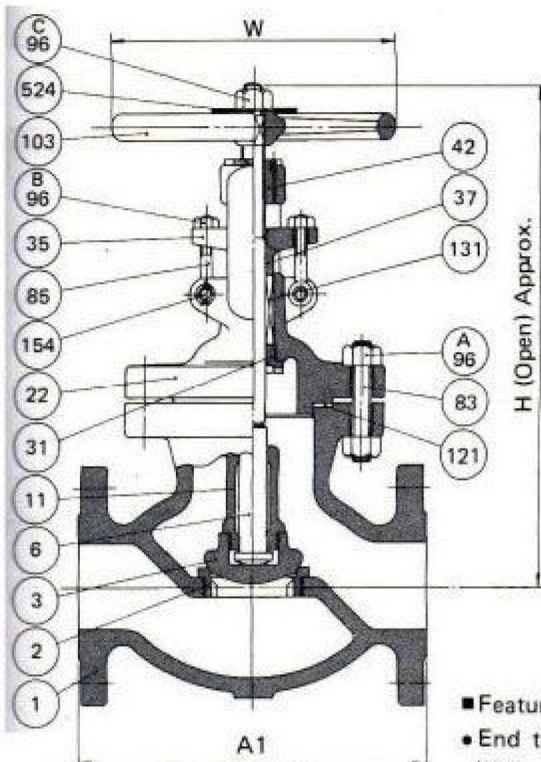
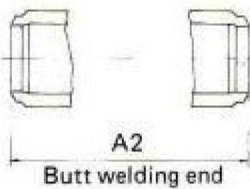


Figure No.

GL010RA	150 lb Globe RF
GL010WA	150 lb Globe Weld

■ Features

- End to end dimensions and Wall thicknesses conform to ANSI and API specifications.
- 10 in. and smaller Valves have a one piece Bonnet and Yoke design.
- 12 in. and larger Valves have a two piece Bonnet and Yoke design.
- Gear operator can be furnished upon request.
- 12 in. and larger Valves have hammer blow Handwheel.
- Angle and Stop check valves also available. Data supplied upon request.



Material Specifications Trim No. 8

NO.	PART NAME	MATERIAL
GU	Bevel Gear Unit	Cast Iron + etc.
524	Name Plate	18Cr-8Ni S. Steel
154	Eye Bolt Pin	13% Cr. S. Steel
131	Packing	*3
121	Gasket	*2
103	Handwheel	Nodular Iron
96D	Yoke Bolt Nut	ASTM A 194 Gr.2H
96C	Wheel Nut	Carbon Steel
96B	Eye Bolt Nut	ASTM A 194 Gr.2H
96A	Bonnet Bolt Nut	ASTM A 194 Gr.2H
85	Eye Bolt	ASTM A 193 Gr.B7
84	Yoke Bolt	ASTM A 193 Gr.B7
83	Bonnet Bolt	ASTM A 193 Gr.B7
42	Yoke Bush	Al-Bronze
37	Gland	ASTM A 182 Gr.F6a
35	Gland Flange	Carbon Steel
31	Bonnet Bush	ASTM A 182 Gr.F6a
22	Bonnet Yoke	ASTM A 216 Gr.WCB
11	Disc Stem Ring	ASTM A 182 Gr.F6a
6	Stem	ASTM A 182 Gr.F6a
3	Disc	ASTM A 182 Gr.F6a*1
2	Body Seat Ring	ASTM A 105 + STL
1	Body	ASTM A 216 Gr. WCB

- Note *1 12 in. & larger ASTM A216 Gr. WCB + 13% Cr. deposit
 *2 Compressed asbestos or Corrugated metal.
 *3 Inconel wire reinforced asbestos braided packing.

Dimensions (in./mm)

Nom. Size	in.	2	2-1/2	3	4	5	6	8	10	12	14	16	18
A1	in.	8	8-1/2	9-1/2	11-1/2	14	16	19-1/2	24-1/2	27-1/2	31	36	38-1/2
A2	in.	8	8-1/2	9-1/2	11-1/2	14	16	19-1/2	24-1/2	27-1/2	31	36	38-1/2
H	in.	13-3/8	15-1/4	15-3/4	17-3/4	19-3/8	21-3/8	25-5/8	28-3/4	35	51	63-3/4	78
W	in.	7-7/8	7-7/8	9-7/8	11-13/16	11-13/16	14	17-11/16	19-11/16	22-1/16	24	24	24
L	in.	-	-	-	-	-	-	-	-	-	20-3/16	20-3/16	17
Weight (Approx.)	RF	53	77	82	139	221	267	401	650	1018	1521	2095	3969
		Kg	24	35	37	63	100	121	182	295	460	690	1800
	BW	42	66	64	106	187	221	331	496	838	1175	1874	3638
		Kg	19	30	29	48	85	100	150	225	380	600	1650

YONEKI VALVE

ANSI 300 CAST STEEL GLOBE VALVE BOLTED BONNET O.S. & Y.

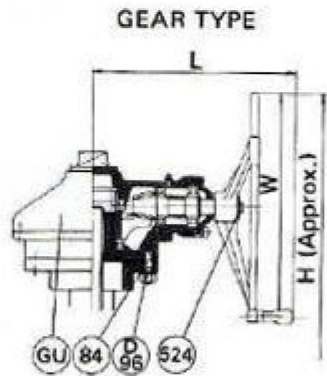
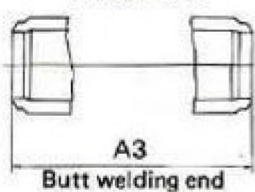
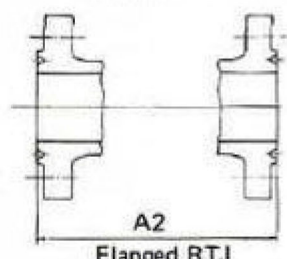
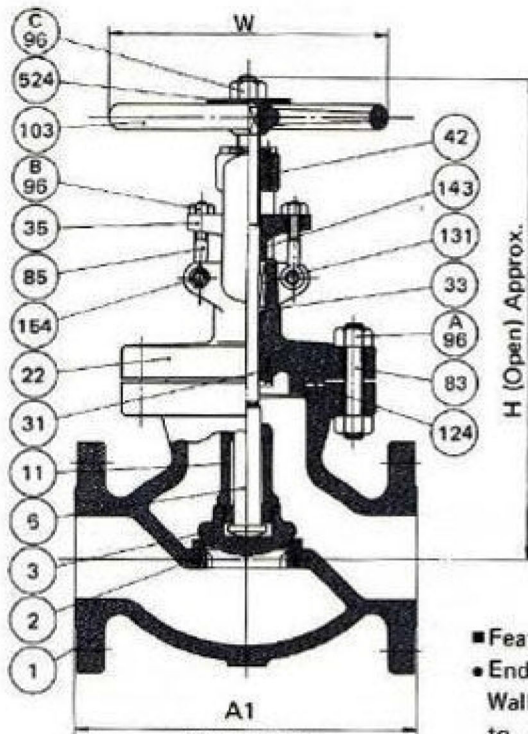


Figure No.	
GL030RA	300 lb Globe RF
GL030JA	300 lb Globe RTJ
GL030WA	300 lb Globe Weld

- Features
- End to end dimensions and Wall thicknesses conform to ANSI and API specifications.
- 6 in. and smaller Valves have a one piece Bonnet and Yoke design.
- 8 in. and larger Valves have a two piece Bonnet and Yoke design.
- Gear operator can be furnished upon request.
- 8 in. and larger Valves have hammer blow Handwheel.
- Angle and Stop check valves also available. Data supplied upon request.

Material Specifications Trim No. 8

NO.	PART NAME	MATERIAL
GU	Bevel Gear Unit	Cast Iron + etc.
524	Name Plate	18Cr-8Ni S. Steel
154	Eye Bolt Pin	13% Cr. S. Steel
131	Packing	*3
124	Gasket	*2
103	Handwheel	Nodular Iron
96D	Yoke Bolt Nut	ASTM A 194 Gr.2H
96C	Wheel Nut	Carbon Steel
96B	Eye Bolt Nut	ASTM A 194 Gr.2H
96A	Bonnet Bolt Nut	ASTM A 194 Gr.2H
85	Eye Bolt	ASTM A 193 Gr.B7
84	Yoke Bolt	ASTM A 193 Gr.B7
83	Bonnet Bolt	ASTM A 193 Gr.B7
42	Yoke Bush	Al-Bronze
37	Gland	ASTM A 182 Gr.F6a
35	Gland Flange	Carbon Steel
33	Packing Washer	ASTM A 182 Gr.F6a
31	Bonnet Bush	ASTM A 182 Gr.F6a
22	Bonnet Yoke	ASTM A 216 Gr.WCB
11	Disc Stem Ring	ASTM A 182 Gr.F6a
6	Stem	ASTM A 182 Gr.F6a
3	Disc	ASTM A 182 Gr.F6a*1
2	Body Seat Ring	ASTM A 105 + STL
1	Body	ASTM A 216 Gr. WCB

Note *1 10 in. & larger ASTM A 216 Gr. WCB + 13% Cr. deposit
 *2 Spiral wound 304 s. steel asbestos filled
 *3 Inconel wire reinforced asbestos braided packing

Dimensions (in./mm)

Norm. Size	in.	mm	2	2-1/2	3	4	5	6	8	10	12	14	16
A1	in.	mm	10-1/2	11-1/2	12-1/2	14	15-3/4	17-1/2	22	24-1/2	28	35	42
A2	in.	mm	14-1/8	12-1/8	13-1/8	14-5/8	16-3/8	18-1/8	22-5/8	25-1/8	28-3/8	39-5/8	42-5/8
A3	in.	mm	10-1/2	11-1/2	12-1/2	14	15-3/4	17-1/2	22	24-1/2	28	35	42
H	in.	mm	14-5/8	17-1/4	17-3/8	20-3/8	26-3/8	28-3/4	37	53	57-3/8	61-3/4	67
W	in.	mm	2-7/8	11-3/16	11-13/16	14	15-3/4	17-11/16	22-1/16	24	24	24	28
L	in.	mm	200	300	300	355	400	450	560	610	610	610	610
RF	lb	Kg	75	115	132	203	333	450	719	1257	2315	3008	4851
BW	lb	Kg	69	88	97	150	287	353	595	1058	2073	2972	4410
			27	40	44	68	130	160	270	480	940	1350	2000

YONEKI™

**Cast Steel Check Valve
Class 150 - 300 - 600 - 900**

**Swing Flanged Type
API/ANSI Std.**



YONEKI VALVE

ANSI 150 CAST STEEL SWING CHECK VALVE BOLTED COVER

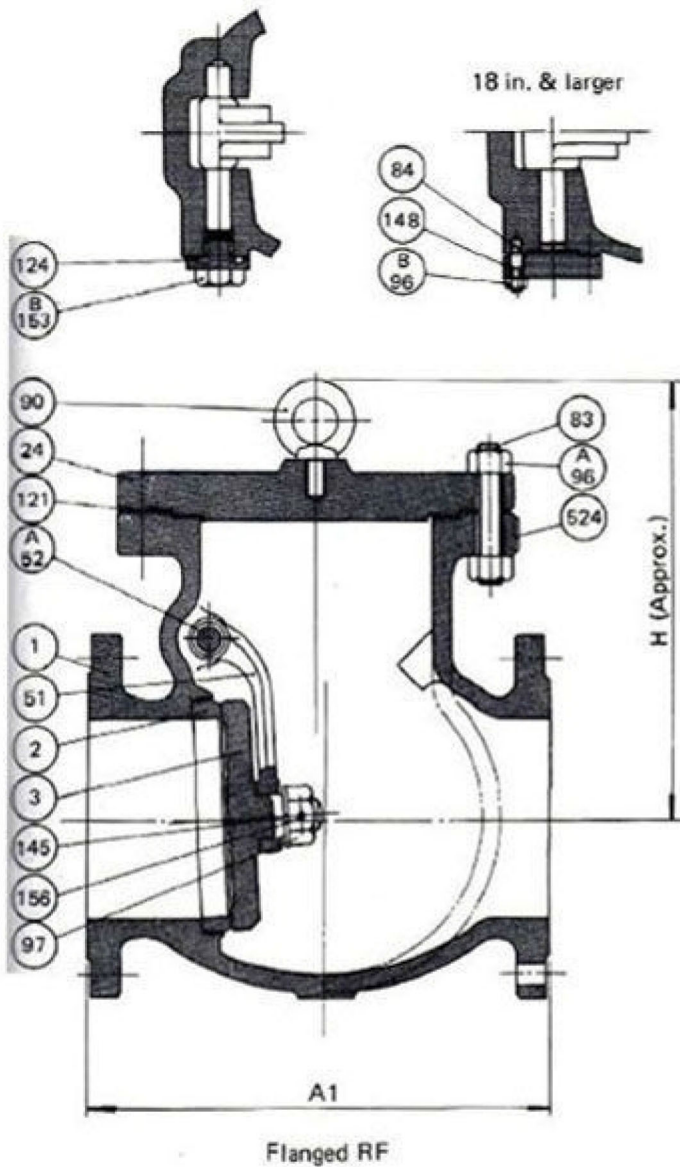


Figure No.

SC010RA	150 lb Swing Check RF
SC010WA	150 lb Swing Check Weld

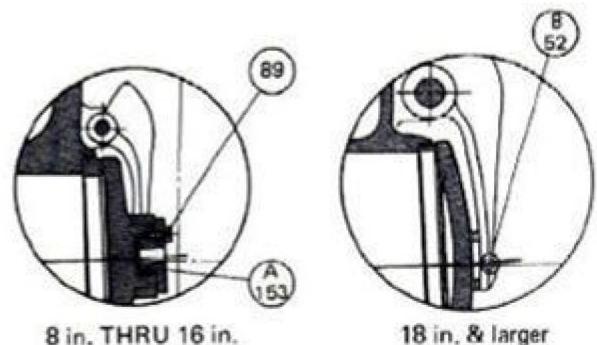
■ Features

- End to end dimensions and Wall thicknesses conform to ANSI and API specifications.
- Flange dimensions; 24 in. and smaller Valves conform to ANSI B16.5.
- 26 in. and larger Valves conform to API 605.
- Internal Hinge pin design is available.
- Lift check valve also available. Data supplied upon request.

Material Specifications Trim No. B

No.	PART NAME	MATERIAL
624	Name Plate	18Cr-8Ni S. Steel
156	Knock Pin	18Cr-8Ni S. Steel
153B	Hinge Pin Plug	ASTM A105
153A	Disc Plug	ASTM A182 Gr.F6a
148	Hinge Pin Cover	ASTM A105
145	Disc Washer	18Cr-8Ni S. Steel
124	Hinge Pin Gasket	*5
121	Cover Gasket	*5
97	Disc Nut	18Cr-8Ni S. Steel
96B	Cover Bolt Nut	ASTM A194 Gr.2H
96A	Cover Bolt Nut	ASTM A194 Gr.2H
90	Eye Bolt	Carbon Steel *4
89	Set Bolt	18Cr-8Ni S. Steel
84	Cover Bolt	ASTM A193 Gr.B7
83	Cover Bolt	ASTM A193 Gr.B7
52B	Hinge Pin	ASTM A182 Gr.F6a
52A	Hinge Pin	ASTM A182 Gr.F6a
51	Swing Lever	ASTM A105 *3
24	Cover	ASTM A105 *2
3	Disc	ASTM A182 Gr.F6a *1
2	Body Seat Ring	ASTM A105 + STL
1	Body	ASTM A216 Gr.WCB

- Note *1 14 in. & larger ASTM A216 Gr.WCB + 13% Cr. deposit
 *2 12 in. & larger ASTM A216 Gr.WCB
 *3 8 in. & larger ASTM A216 Gr.WCB
 *4 6 in. & larger
 *5 Compressed asbestos or Corrugated metal
 *6 Spiral wound 304 s. steel asbestos filled



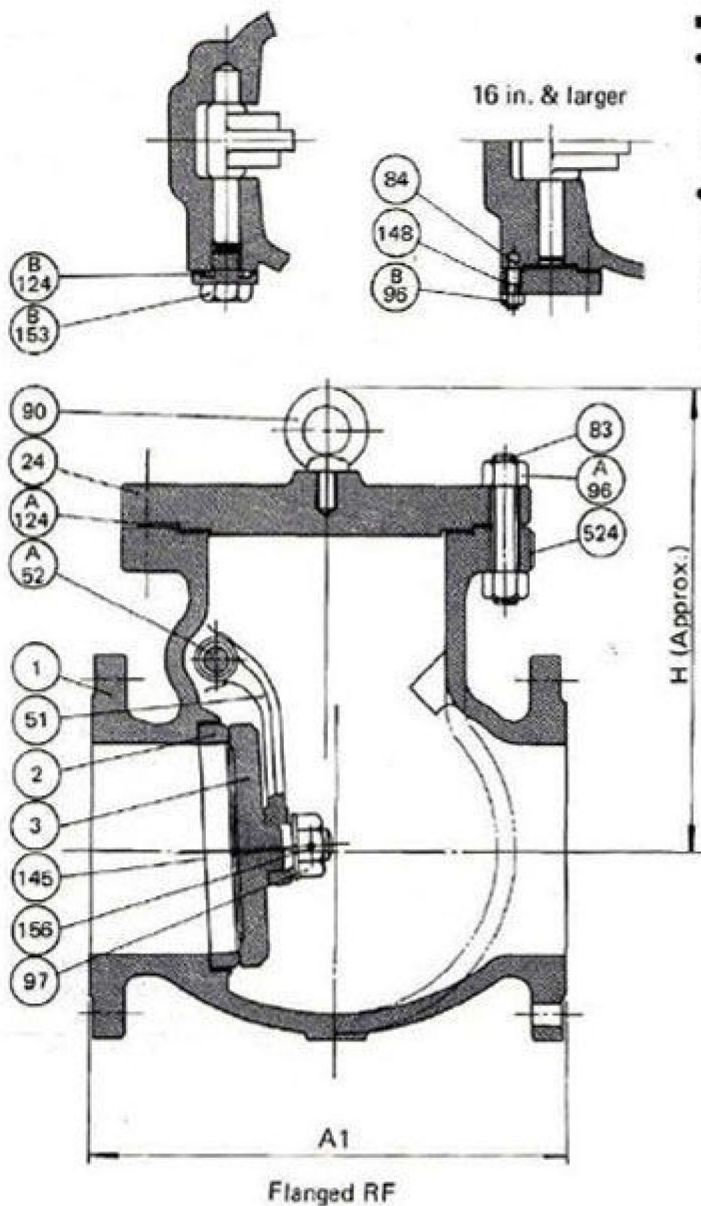
Dimensions (in./mm)

Nom. Size	2	2-1/2	3	4	5	6	8	10	12	14	16	18	20	24	26	28	30	36
in.	2	2.5	3	4	5	6	8	10	12	14	16	18	20	24	26	28	30	36
mm	50	63	76	100	125	150	200	250	300	350	400	450	500	600	650	700	750	900
A1	8	8-1/2	9-1/2	11-1/2	13	14	16-1/2	24-1/2	27-1/2	31	34	38-1/2	38-1/2	51	51	57	60	77
in.	203	216	241	292	330	356	415	622	698	787	864	978	978	1295	1295	1448	1524	1916
mm	8	8-1/2	9-1/2	11-1/2	13	14	16-1/2	24-1/2	27-1/2	31	34	38-1/2	38-1/2	51	51	57	60	77
A2	203	216	241	292	330	356	415	622	698	787	864	978	978	1295	1295	1448	1524	1956
in.	6-3/8	7	7-1/2	8-5/8	9-1/4	10-3/4	13-1/8	17-5/8	21-1/4	22	24-5/8	27-5/8	28-5/8	29-3/8	31-3/8	34	35-1/4	43-3/8
mm	175	178	191	219	235	254	334	448	540	559	626	651	676	800	849	1141	1149	1319
H	44	53	57	71	85	111	133	169	211	223	253	266	289	319	349	452	452	552
in.	20	24	25	31	34	46	56	69	85	87	100	106	113	126	135	178	178	220
mm	31	37	41	51	57	76	94	117	146	152	178	188	203	226	241	325	325	394
RF	14	17	26	37	52	80	133	213	294	440	568	710	920	1270	1650	1950	2250	3150
mm	14	17	26	37	52	80	133	213	294	440	568	710	920	1270	1650	1950	2250	3150

BOLTED COVER SWING CHECK VALVES

YONEKI VALVE

ANSI 300 CAST STEEL SWING CHECK VALVE BOLTED COVER



■ Features

- End to end dimensions and Wall thickness conform to ANSI and API specifications.
- Flange dimensions:
24 in. and smaller Valves conform to ANSI B16.5.
26 in. and larger Valves conform to API 605.

Figure No.

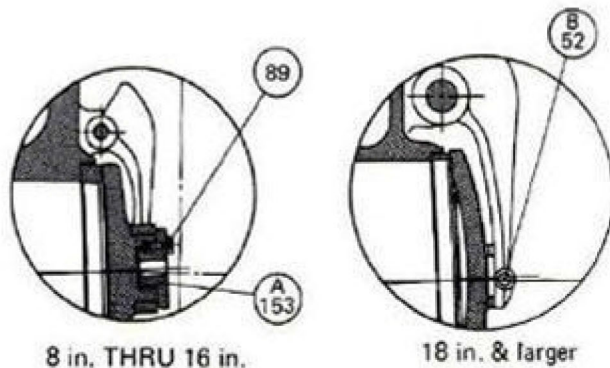
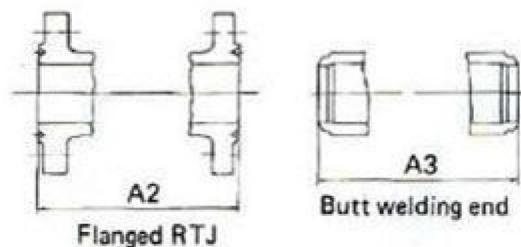
SC030RA	300 lb Swing Check RF
SC030JA	300 lb Swing Check RTJ
SC030WA	300 lb Swing Check Weld

- Internal Hinge pin design is available.
- Lift check valve also available. Data supplied upon request.

Material Specifications Trim No. 8

NO	PART NAME	MATERIAL
524	Name Plate	18Cr-8Ni S. Steel
156	Knock Pin	18Cr-8Ni S. Steel
153B	Hinge Pin Plug	ASTM A105
153A	Disc Plug	ASTM A182 Gr. F6a
148	Hinge Pin Cover	ASTM A105
145	Disc Washer	18Cr-8Ni S. Steel
124B	Hinge Pin Gasket	*5
124A	Cover Gasket	*5
97	Disc Nut	18Cr-8Ni S. Steel
96B	Cover Bolt Nut	ASTM A194 Gr.2H
96A	Cover Bolt Nut	ASTM A194 Gr.2H
90	Eye Bolt	Carbon Steel *4
89	Set Bolt	18Cr-8Ni S. Steel
84	Cover Bolt	ASTM A193 Gr. B7
83	Cover Bolt	ASTM A193 Gr. B7
52B	Hinge Pin	ASTM A182 Gr. F6a
52A	Hinge Pin	ASTM A182 Gr. F6a
51	Swing Lever	ASTM A105 *3
24	Cover	ASTM A105 *2
3	Disc	ASTM A182 Gr. F6a*1
2	Body Seat Ring	ASTM A105 + STL
1	Body	ASTM A216 Gr. WCB

- Note *1 14 in. & larger ASTM A216 Gr. WCB + 13% Cr. deposit
 *2 12 in. & larger ASTM A216 Gr. WCB
 *3 8 in. & larger ASTM A216 Gr. WCB
 *4 4 in. & larger
 *5 Spiral wound 304 s. steel asbestos filled



Dimensions (in./mm)

Num. Size	in.	mm	2	2-1/2	3	4	5	6	8	10	12	14	16	18	20	24	26	28	30	36
A1	10-1/2	267	11-1/2	12-1/2	14	15-3/4	17-1/2	21	24-1/2	28	33	34	38-1/2	40	53	53	59	62-3/4	82	
A2	11-1/8	283	12-1/8	13-1/8	14-5/8	16-3/8	18-1/8	21-5/8	25-1/8	28-5/8	33-5/8	34-5/8	39-1/8	40-5/8	53-7/8	54	60	63-3/4	83	
A3	10-1/2	267	11-1/2	12-1/2	14	15-3/4	17-1/2	21	24-1/2	28	33	34	38-1/2	40	53	53	59	62-3/4	82	
H	7-3/4	197	8	8-3/4	10-7/8	11-5/8	13-1/4	16-1/4	18-1/4	22-1/8	23-1/2	25-3/8	29-7/8	33-5/8	37	41-3/8	45-3/4	50	60-5/8	
RF	77	197	82	135	181	243	342	591	838	1091	1566	2095	2666	2877	4851	5513	6174	7497	11625	
RTJ	77	197	77	130	182	242	342	591	838	1091	1566	2095	2666	2877	4851	5513	6174	7497	11625	
Wt. (Approx.)	32	35	50	65	70	128	230	270	460	555	800	970	1070	1780	2120	2400	2950	4300	5000	