

## Huge Aluminum Ground Mounting(concrete foundation)



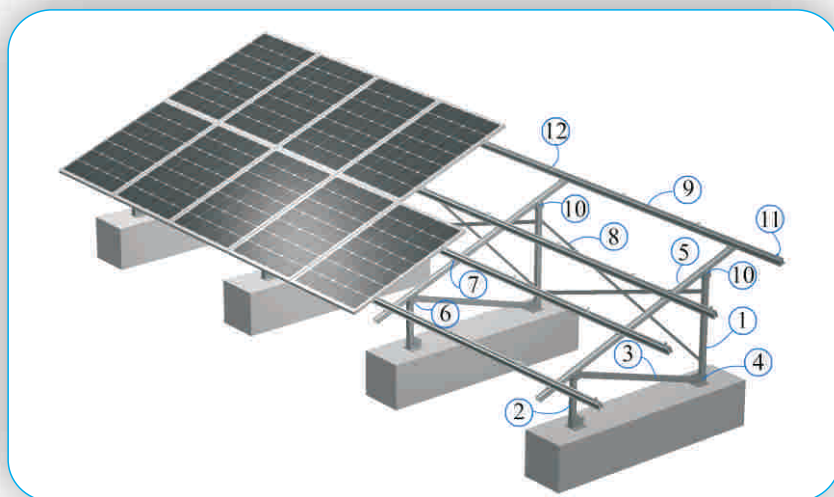
### Introduction

Hugergy's aluminum racking system with concrete foundation can fit in both roof and ground, all the components are full aluminum. Material is AL 6005-T5, anodized surface treatment, racking system is very light and very stable. Almost fit in all the panels in current market.

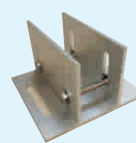
Technical Parameters	
Item	Illustration
Installation site	ground
Snow Load	Up to 1.5KN/m2
Module orientation	Portrait
Angle	0-60 degree
Ground clearance	300mm-3000mm
Aplicable module	Framed and frameless
Wind load	Up to 60m/s
Color	Nature

Benefits
1. Material: AL 6005-T5, with surface anodized treatment, high corrosion resistance.
2. Installation: Components pre-assembled in advance before package. Modules are easy to install together. It will save you labour cost and installation time.
3. Certificate: AS/NZS 1170.2-2002, SGS report and other international standards.
4. Warranty: 10 years warranty and 20 years product service life.

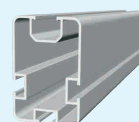
## Huge Aluminum Ground Mounting(concrete foundation)



1. Back Leg
2. Front Leg
3. Enforcement Pipe



4. Base



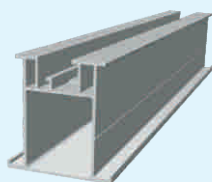
5. Support Pipe



6. H-connector for front leg



7. Rail and Square Pipe's Connector



9. T-Rail



10. H-connector for back leg

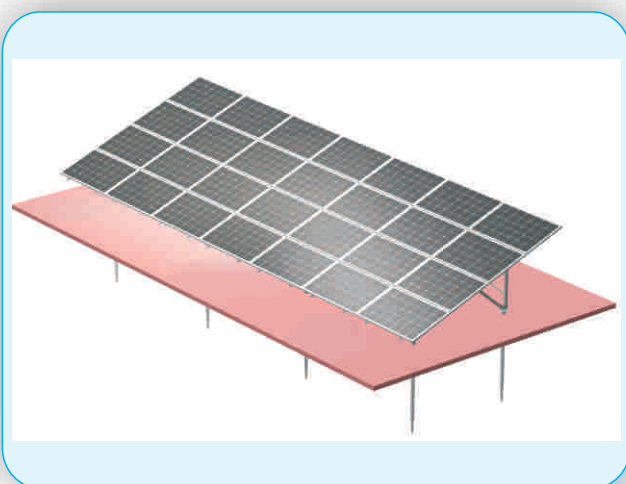


8. L Connector

### Mounting Components

No.	Part No.	Description	Material
1	HE-AFL	Front Leg	Anodized AL6005-T5
2	HE-ABL	Back Leg	Anodized AL6005-T5
3	HE-AEP-01	Enforcement Pipe	Anodized AL6005-T5
4	HE-AB	Base	Anodized AL6005-T5
5	HE-SP	Support Pipe	Anodized AL6005-T5
6	HE-AFC	H-connector for front leg	Anodized AL6005-T5
7	HE-RC	Rail and Square Pipe's Connector	Anodized AL6005-T5
8	HE-AEP-02	L Connector	Anodized AL6005-T5
9	HE-TR	T-Rail	Anodized AL6005-T5
10	HE-ABC	H-connector for back leg	Anodized AL6005-T5

## Hugergy's Aluminum Ground Mounting System (ground screw)



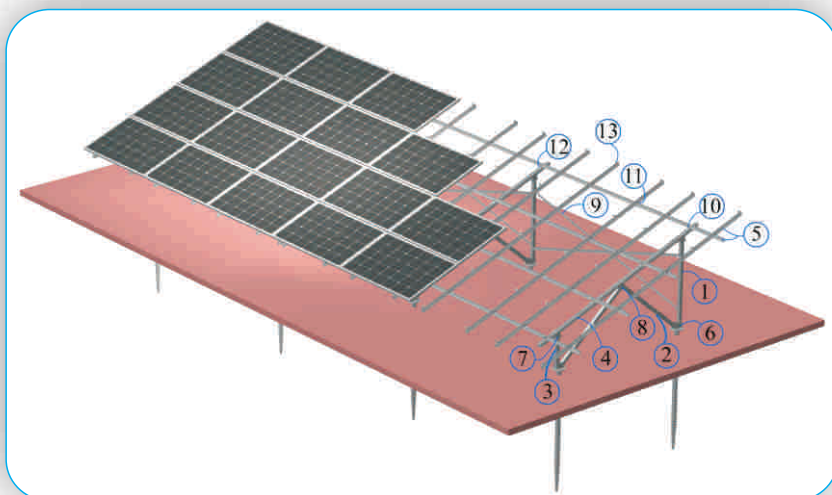
### Introduction

Hugergy's aluminum racking system with ground screw can fit in both roof and ground, all the components are full aluminum. Material is AL 6005-T5, anodized surface treatment, racking system is very light and very stable. Almost fit in all the panels in current market.

Technical Parameters	
Item	Illustration
Installation site	ground
Snow Load	Up to 1.5KN/m <sup>2</sup>
Module orientation	Portrait or landscape
Angle	0-60 degree
Ground clearance	300mm-3000mm
Applicable module	Framed and frameless
Wind load	Up to 60m/s
Color	Nature

Benefits
1. Material: AL 6005-T5, with surface anodized treatment, high corrosion resistance.
2. Installation: Components pre-assembled in advance before package. Modules are easy to install together. It will save you labour cost and installation time.
3. Certificate: AS/NZS 1170.2-2002, SGS report and other international standards.
4. Warranty: 10 years warranty and 20 years product service life.

## Huge Aluminum Ground Mounting



- 1. Back Leg
- 2. Enforcement Pipe
- 3. Front Leg

- 4. Support Pipe

- 5. 1#- Rail

- 6. Base

- 7. H-connector for front leg

### Mounting Components

No.	Part No.	Description	Material
1	HE-ABL	Back Leg	Anodized AL6005-T5
2	HE-AEP-01	Enforcement Pipe	Anodized AL6005-T5
3	HE-AFL	Front Leg	Anodized AL6005-T5
4	HE-SP	Support Pipe	Anodized AL6005-T5
5	HE-R-1#	1#- Rail	Anodized AL6005-T5
6	HE-AB	Base	Anodized AL6005-T5
7	HE-AFC	H-connector for front leg	Anodized AL6005-T5
8	HE-ABC	H-connector for back leg	Anodized AL6005-T5
9	HE-AEP-02	L Connector	Anodized AL6005-T5
10	HE-LC-02	Rail and Square Pipe's Connector	Anodized AL6005-T5
11	HE-LC-06	Rails' Connector	Anodized AL6005-T5

- 9. L Connector

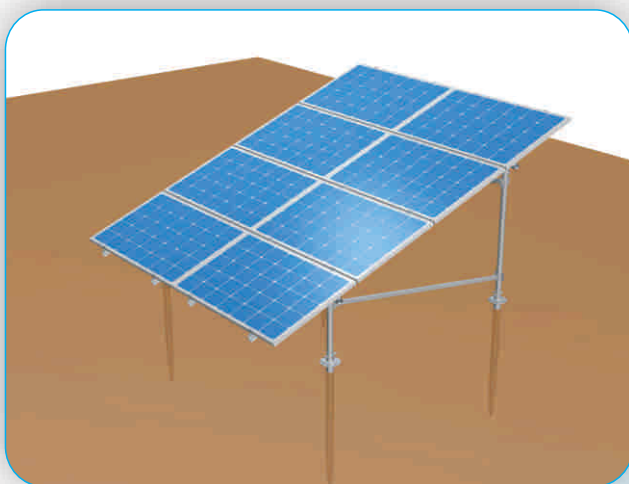
- 10. Rail and Square Pipe's Connector

- 11. Rails' Connector

- 8. H-connector for back leg



## Huge Steel Ground Mounting (Ground Screw)



### Introduction

Hugergy's steel ground mounting system is very flexible in design&panel layout,the angle can be easily seted between 0 degree to 60 degree.Unique rail,fiexed fittings,Q235 steel tube(60mm outer diameter process zinc plating),U shape screw,pip cap,ground screw can be installed very swiftly,so it can save lots of labour cost and time.Avoid cutting ,welding in the worksite,ensure product's high corrosion resistance,structure strength and elegant appearance.

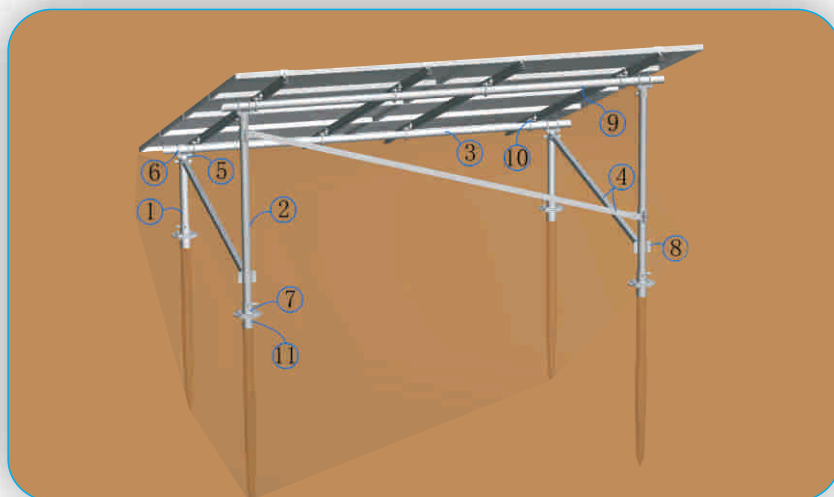
### Technical Parameters

Item	Illustration
Installation site	ground
Snow Load	Up to 1.5KN/m2
Module orientation	Portrait or landscape
Angle	0-60 degree
Ground clearance	300mm-3000mm
Aplicable module	Framed and frameless
Wind load	Up to 60m/s
Color	Nature

### Benefits

- 1.Material:Al 6005-T5, with surface anodized treatment, high corrosion resistance, hot galvanized steel Q235 and dacromet steel Q235
- 2.Installation:Components pre-assembled in advance before package.Modules are easy to install together.It will save you labour cost and installation time.
- 3.Certificate:AS/NZS 1170.2-2002,SGS report and other international standards.
- 4.Warranty:10 years warranty and 20 years product service life .

## Huge Ground Mounting (Ground Screw)



### Mounting Components

No.	Part No.	Description	Material
1	HE-TFL	Front Leg	Hot Galvanized Steel Q235
2	HE-TBL	Back Leg	Hot Galvanized Steel Q235
3	HE-TCP	Cross Pipe	Hot Galvanized Steel Q235
4	HE-TEP	Enforcement Pipe	Hot Galvanized Steel Q235
5	HE-FCB-01	Pipe Cap Kit	Dacromet Steel Q235
6	HE-UB	U Bolt	Dacromet Steel Q235
7	HE-FCA-03	Pipe Cap Kit	Dacromet Steel Q235
8	HE-PS-02	Pipe Sleeve for One Enforcement Pipe	Hot Galvanized Steel Q235
9	HE-R-1#	1# Rail	Anodized AL6005-T5
10	HE-LC-01	L-Splice Kit	Anodized AL6005-T5
11	HE-AGS-1600	Adjustable Ground Screw	Hot Galvanized Steel Q235



1. Front Leg  
2. Back Leg  
3. Cross Pipe



4. Enforcement Pipe



5. Pipe Cap Kit



6. U Bolt



7. Pipe Cap Kit



9. 1# Rail



10. L-Splice Kit



11. Adjustable Ground Screw



8. Pipe Sleeve for One Enforcement Pipe

## Huge Steel Ground Mounting (Concrete Foundation)



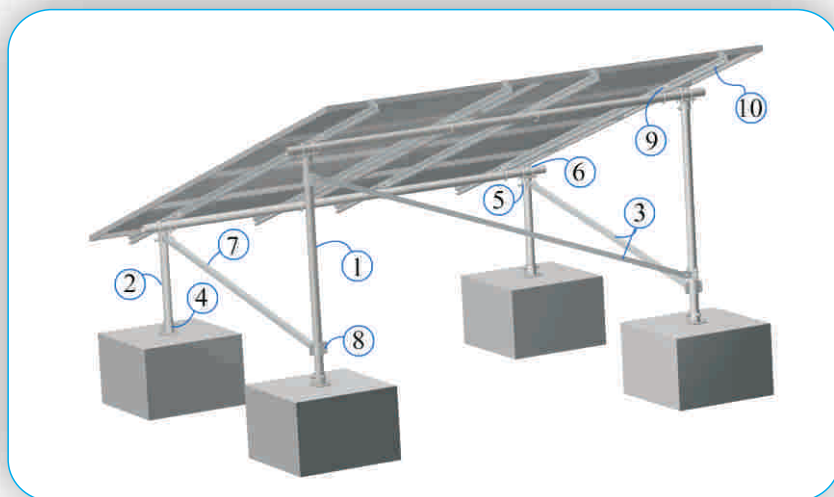
### Introduction

Hugergy's steel ground mounting is very flexible in design&panel layout,the angle can be easily seted between 0 degree to 60 degree.Unique rail,fiexed fittings,Q235 steel tube(60mm outer diameter process zinc plating),U shape screw,pip cap,ground screw can be installed very swiftly,so it can save lots of labour cost and time.Avoid cutting ,welding in the worksite,ensure product's high corrosion resistance, structure strength and elegant appearance.

Technical Parameters	
Item	Illustration
Installation site	ground
Snow Load	Up to 1.5KN/m2
Module orientation	Portrait or landscape
Angle	0-60 degree
Ground clearance	300mm-3000mm
Aplicable module	Framed and frameless
Wind load	Up to 60m/s
Color	Nature

Benefits
1.Material:Al 6005-T5, with surface anodized treatment, high corrosion resistance, hot galvanized steel Q235 and dacromet steel Q235.
2.Installation:Components pre-assembled in advance before package.Modules are easy to install together.It will save you labour cost and installation time.
3.Certificate:AS/NZS 1170.2-2002,SGS report and other international standards.
4.Warranty:10 years warranty and 20 years product service life .

## Huge Steel Ground Mounting (Buried Ground)



1. Back Leg  
2. Front Leg



3. Enforcement Pipe



4. Pipe Cap Kit



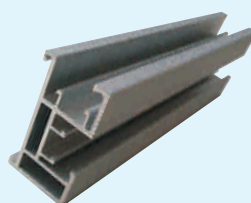
5. Pipe Cap Kit



6. U Bolt



9. L-Splice Kit



10. Rail

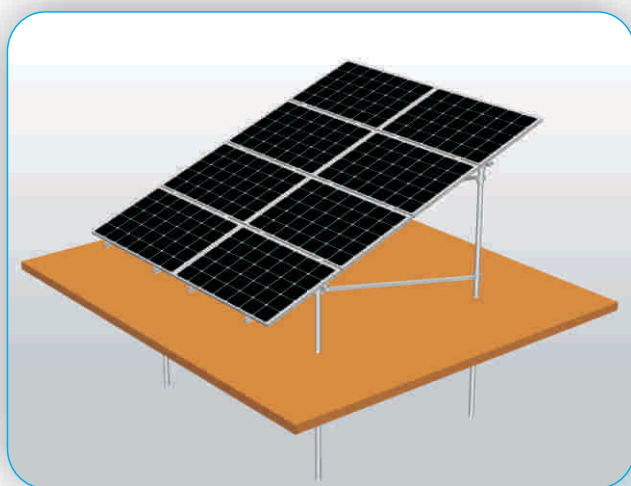


8. Pipe Sleeve for One Enforcement Pipe

### Mounting Components

No.	Part No.	Description	Material
1	HE-TBL	Back Leg	Hot Galvanized Steel Q235
2	HE-TFL	Front Leg	Hot Galvanized Steel Q235
3	HE-TEP	Enforcement Pipe	Hot Galvanized Steel Q235
4	HE-FCA-01	Pipe Cap Kit	Hot Galvanized Steel Q235
5	HE-FCB-01	Pipe Cap Kit	Hot Galvanized Steel Q235
6	HE-UB	U Bolt	Hot Galvanized Steel Q235
8	HE-PS-02	Pipe Sleeve for One Enforcement Pipe	Hot Galvanized Steel Q235
9	HE-LC-01	L-Splice Kit	Anodized AL6005-T5
10	HE-R-1#	1# Rail	Anodized AL6005-T5

## Huge Steel Ground Mounting (Buried Ground)



### Introduction

Hugergy's ground mounting system is very flexible in design&panel layout,the angle can be easily seted between 0 degree to 60 degree.Unique rail,fiexed fittings,Q235 steel tube(60mm outer diameter process zinc plating),U shape screw, cap,ground screw can be installed very swiftly,so it can save lots of labour cost and time.Plus,it avoid cutting , welding in the worksite,ensure product's high corrosion resistance,structure strength and elegant appearance.

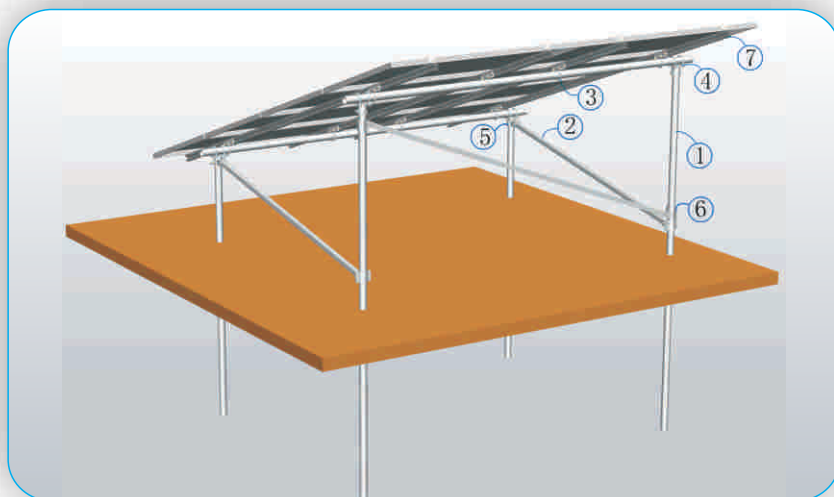
### Technical Parameters

Item	Illustration
Installation site	ground
Snow Load	Up to 1.5KN/m2
Module orientation	Portrait or landscape
Angle	0-60 degree
Ground clearance	300mm-3000mm
Aplicable module	Framed and frameless
Wind load	Up to 60m/s
Color	Nature

### Benefits

- 1.Material:Al 6005-T5, with surface anodized treatment, high corrosion resistance; hot galvanized steel Q235 and dacromet steel Q235.
- 2.Installation:Components pre-assembled in advance before package.Modules are easy to install together.It will save you labour cost and installation time.
- 3.Certificate:AS/NZS 1170.2-2002,SGS report and other international standards.
- 4.Warranty:10 years warranty and 20 years product service life .

## Huge Steel Ground Mounting (Buried Ground)



1. Back Leg  
8. Front Leg



2. Enforcement Pipe



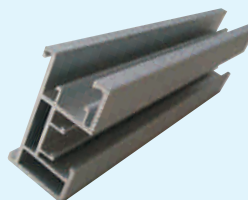
3. L-Splice Kit



4. Pipe Cap Kit



6. Pipe Sleeve for One Enforcement Pipe



7. 1# Rail



5. Pipe Cap Kit

### Mounting Components

No.	Part No.	Description	Material
1	HE-TBL	Back Leg	Hot Galvanized Steel Q235
2	HE-TEP	Enforcement Pipe	Hot Galvanized Steel Q235
3	HE-LC-01	L-Splice Kit	Anodized AL6005-T5
4	HE-FCA-01	Pipe Cap Kit	DACROMET Steel Q235
5	HE-FCB-01	Pipe Cap Kit	DACROMET Steel Q235
6	HE-PS-02	Pipe Sleeve for One Enforcement Pipe	DACROMET Steel Q235
7	HE-R-1#	1# Rail	Anodized AL6005-T5
8	HE-TFL	Front Leg	Hot Galvanized Steel Q235

## Huge Pole Mounting



### Introduction

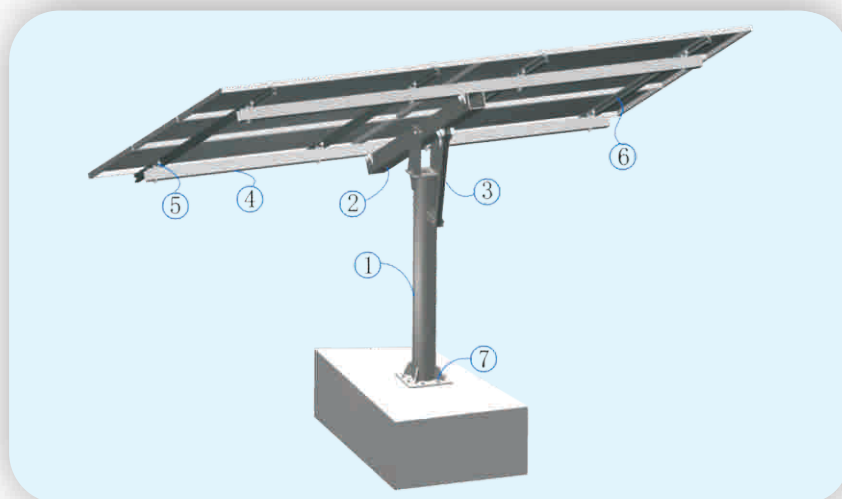
Huge's solo pole racking system is design according to structural mechanics principle, pass the strict test. Choose Zinc plating steel plate, anodized aluminum with high corrosion resistance, could be wildy used outdoor.

Technical Parameters	
Item	Illustration
Installation site	ground
Snow Load	Up to 1.5KN/m <sup>2</sup>
Module orientation	Portrait or landscape
Angle	0-60 degree
Ground clearance	300mm-3000mm
Aplicable module	Framed and frameless
Wind load	Up to 60m/s
Color	Nature

Benefits
1. Material: Al 6005-T5, with surface anodized treatment, high corrosion resistance; hot galvanized steel Q235.
2. Installation: Components pre-assembled in advance before package. Modules are easy to install together. It will save you labour cost and installation time.
3. Certificate: AS/NZS 1170.2-2002, SGS report and other international standards.
4. Warranty: 10 years warranty and 20 years product service life .



## Huge Pole Mounting



### Mounting Components

No.	Part No.	Description	Material
1	HE-PM	Post	Hot Galvanized Steel Q235
2	HE-SST	Support Square Tube	Hot Galvanized Steel Q235
3	HE-AB	Adjustable Bar	Hot Galvanized Steel Q235
4	HE-EP	Enforcement Pipe	Hot Galvanized Steel Q235
5	HE-LC-02	L Connector	Anodized AL6005-T5
6	HE-R-1#	1# Rail	Anodized AL6005-T5
7	HE-BB	Buried Bolt	SUS304

1. Post

2. Support Square Tube

3. Adjustable Bar

4. Enforcement Pipe

6. Buried Bolt

7. Rail

5. L Connector

## Huge Pole II Mounting



### Introduction

The HUGE Pole II Mounting has been developed for pole top installations. The system composed with galvanized steel pipe and rails, the special modules, buried bolts and the high degree of pre-assembly eliminate the need for onsite cutting, welding and enables quick and easy field PV module installations. And can support different quantity solar panel to meet the customers' requirements.

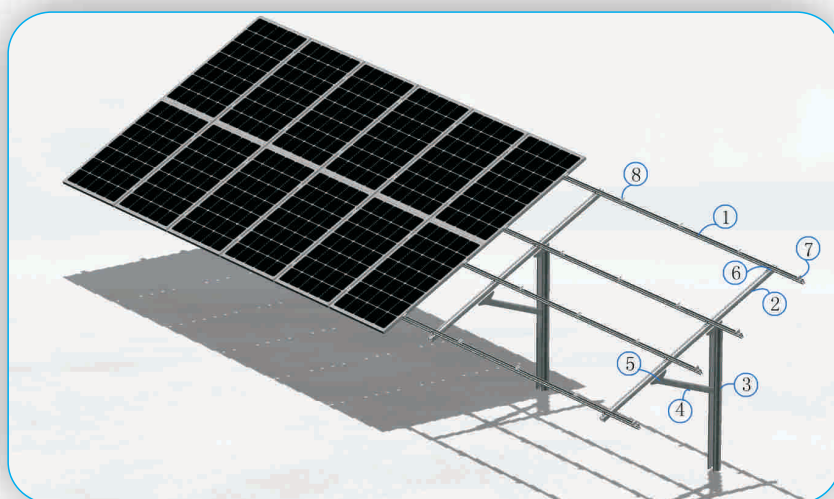
### Technical Parameters

Item	Illustration
Installation site	ground
Snow Load	Up to 1.5KN/m <sup>2</sup>
Module orientation	Portrait or landscape
Angle	0-60 degree
Ground clearance	300mm-3000mm
Applicable module	Framed and frameless
Wind load	Up to 60m/s
Color	Nature

### Benefits

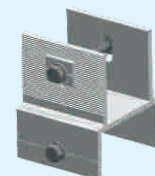
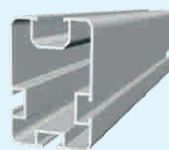
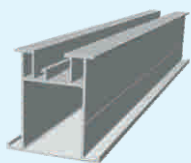
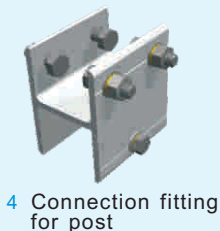
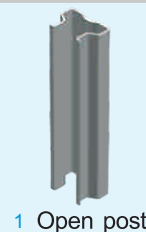
1. Material: Al 6005-T5, with surface anodized treatment, high corrosion resistance; hot galvanized steel Q235.
2. Installation: Components pre-assembled in advance before package. Modules are easy to install together. It will save you labour cost and installation time.
3. Certificate: AS/NZS 1170.2-2002, SGS report and other international standards.
4. Warranty: 10 years warranty and 20 years product service life.

## Huge Pole II Mounting

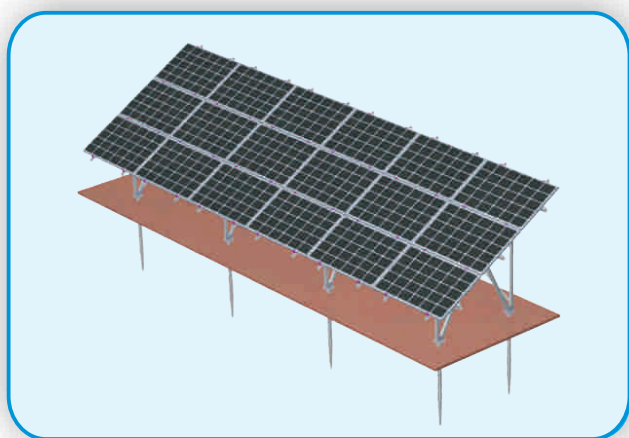


Mounting Components

No.	Part No.	Description	Material
1	HE-MPII	Open post	Galvanized Q235
2	HE-PIITC	Component for connected bar	Anodized Al 6005-T5
3	HE-PIIAT	Connected bar	Anodized Al 6005-T5
4	HE-PIISC	Connection fitting for post	Anodized Al 6005-T5
5	HE-PIIMC	Connection fitting for post	Anodized Al 6005-T5
6	HE-SP	Support square tube	Anodized Al 6005-T5
7	HE-ABC	Component for connected bar	Anodized Al 6005-T5
8	HE-RC	Connector for T-shape rail	Anodized Al 6005-T5
9	HE-STR	T-shape Rail	Anodized Al 6005-T5



## Huge U-shape Aluminum Mounting (ground screw)



### Introduction

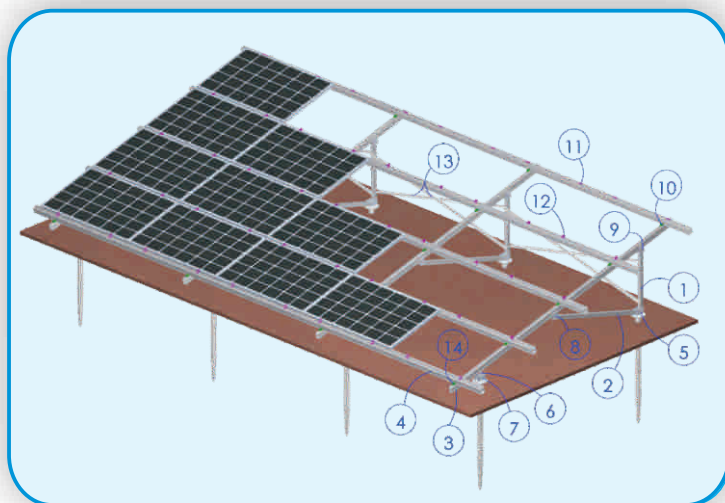
The Hugergy's U-shape Aluminum Ground is engineered for the maximum flexibility possible in designing and planning for open ground. It is made of 100% aluminum to keep the light weight and strong structure.

The system composes with base, T-rail and H-connector to avoid cutting, welding and enable quick and easy field PV module installations.

Technical Parameters	
Item	Illustration
Installation site	ground
Snow Load	Up to 1.5KN/m2
Module orientation	Portrait or landscape
Angle	0-60 degree
Ground clearance	300mm-3000mm
Aplicable module	Framed and frameless
Wind load	Up to 60m/s
Color	Nature

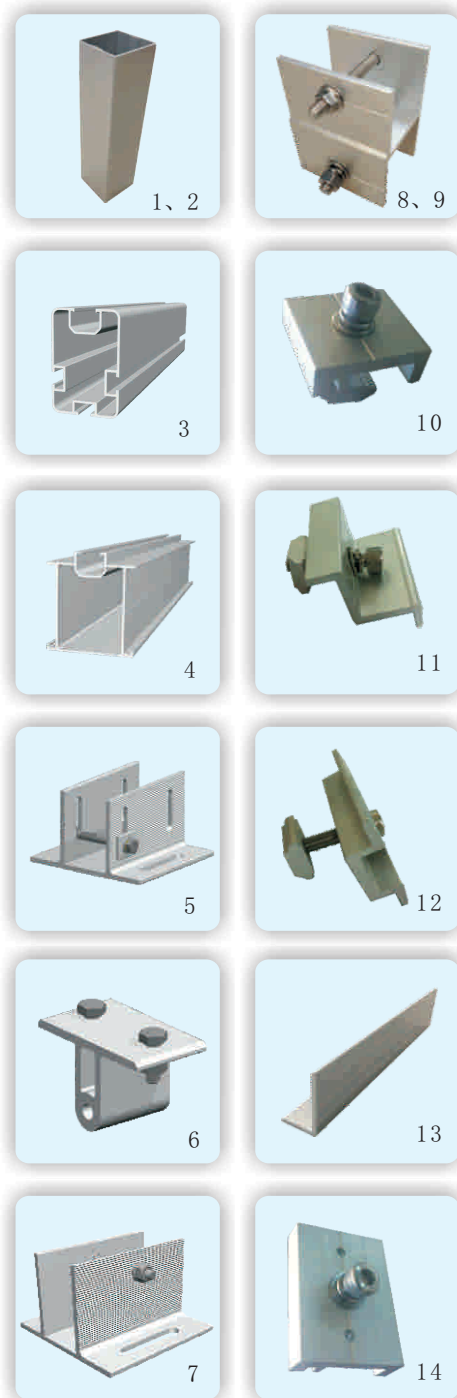
Benefits
1.Material:Al 6005-T5,with surface anodized treatment, high corrosion resistance.
2.Installation:Components pre-assembled in advance before package.Modules are easy to install together.It will save you labour cost and installation time.
3.Certificate:AS/NZS 1170.2-2002,SGS report and other international standards.
4.Warranty:10 years warranty and 20 years product service life .

## Huge U-shape Aluminum Mounting (ground screw)

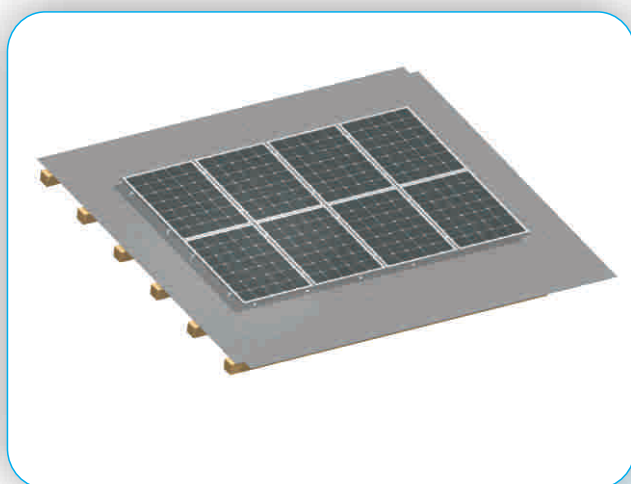


### Mounting Components

No.	Part No.	Description	Material
1	HE-ABL	Back leg	Anodized Al 6005-T5
2	HE-AEP-01	Connected beam	Anodized Al 6005-T5
3	HE-AFL	Front leg	Anodized Al 6005-T5
4	HE-SP	Support beam	Anodized Al 6005-T5
5	HE-STR	U-shape rail	Anodized Al 6005-T5
6	HE-R-1#	1# rail	Anodized Al 6005-T5
7	HE-AB	Base	Anodized Al 6005-T5
8	HE-ABC	H-connector for front leg&back leg	Anodized Al 6005-T5
9	HE-AFC	H-connector	Anodized Al 6005-T5
10	HE-EC	End clamp	Anodized Al 6005-T5
11	HE-MCA	Inter clamp	Anodized Al 6005-T5
12	HE-LC-06	L connector-06	Anodized Al 6005-T5
13	HE-RC	Fixed rail component	Anodized Al 6005-T5
14	HE-AEP-02	Back connected beam	Anodized Al 6005-T5



## Huge Shingle Roof Mounting



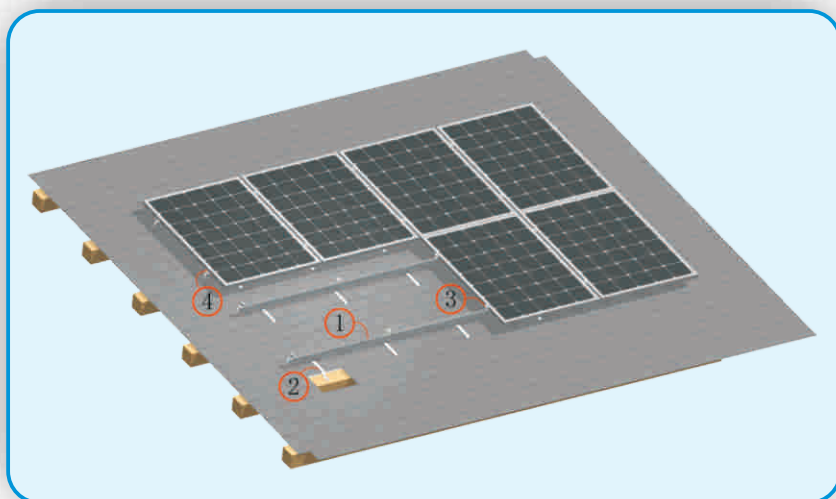
### Introduction

The Huge Shingle Roof Mounting is engineered for the maximum flexibility possible in designing and planning for the commercial and residential roof solar system. It is applicable to install the usual framed module. The special extruded aluminum rail, special module, clamp kit and the various roof hooks can be high pre-assembly and make the installation easy and quick to save your labor cost and time. The customized length can eliminate the weld and cut on-site to keep the high anticorr-osive performance, the structure strength and the appearance.

Technical Parameters	
Item	Illustration
Installation site	roof
Snow Load	Up to 1.5KN/m2
Module orientation	Portrait or landscape
Angle	0-60 degree
Ground clearance	300mm-3000mm
Aplicable module	Framed and frameless
Wind load	Up to 60m/s
Color	Nature

Benefits
1.Material:Al 6005-T5,with surface anodized treatment, high corrosion resistance.
2.Installation:Components pre-assembled in advance before package.Modules are easy to install together.It will save you labour cost and installation time.
3.Certificate:AS/NZS 1170.2-2002,SGS report and other international standards.
4.Warranty:10 years warranty and 20 years product service life .

## Huge Shingle Roof Mounting



1. 2# Rail

### Mounting Components

No.	Part No.	Description	Material
1	HE-R-2#	2# Rail	Anodized AL6005-T5
2	HE-TH-06	Slate Roof Hook	Stainless Steel 304
3	HE-TH-01	Tile Roof Hook	Anodized AL6005-T5
4	HE-MC	Mid Clamp	Anodized AL6005-T5
5	HE-EC	End Clamp	Anodized AL6005-T5

4. Mid Clamp

2. Slate Roof Hook

3. Tile Roof Hook

5. End Clamp



## Huge Metal Roof Mounting



### Introduction

The Huge Metal Roof Mounting is engineered for the maximum flexibility possible in designing and planning for the commercial and residential roof solar system. It is applicable to install the usual framed module. The special extruded aluminum rail, special module, clamp kit and the various roof hooks can be high pre-assembly and make the installation easy and quick to save your labor cost and time. The customized length can eliminate the weld and cut on-site to keep the high anticorrosive performance, the structure strength and the appearance.

### Technical Parameters

Item	Illustration
Installation site	roof
Snow Load	Up to 1.5KN/m <sup>2</sup>
Module orientation	Portrait or landscape
Angle	0-60 degree
Ground clearance	300mm-3000mm
Aplicable module	Framed and frameless
Wind load	Up to 60m/s
Color	Nature

### Benefits

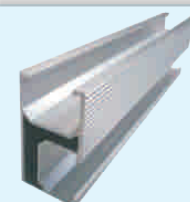
- 1.Material:Al 6005-T5,with surface anodized treatment, high corrosion resistance.
- 2.Installation:Components pre-assembled in advance before package.Modules are easy to install together.It will save you labour cost and installation time.
- 3.Certificate:AS/NZS 1170.2-2002,SGS report and other international standards.
- 4.Warranty:10 years warranty and 20 years product service life .

## Huge Metal Roof Mounting



### Mounting Components

No	Part No	Description	Material
1	HE-R-2#	2# Rail	Anodized AL6005-T5
2	HE-MH-01	Metal Roof Hook	Anodized AL6005-T5&1 EPDM pad&1 stainless steel wood screw
3	HE-MH-03	Metal Roof Hook	Anodized AL6005-T5
4	HE-MH-04	Metal Roof Hook	Anodized AL6005-T5
5	HE-MH-05	Metal Roof Hook	SUS 304
6	HE-MC	Mid Clamp	Anodized AL6005-T5
7	HE-EC	End Clamp	Anodized AL6005-T5
8	HE-MH-02A	Metal Roof Hook	SUS 304&4 EPDM pad&4 self-tapping screw
9	HE-MH-02B	Metal Roof Hook	SUS 304&4 EPDM pad&4 self-tapping screw



1 Rail



2 Metal Roof Hook



3 Metal Roof Hook



4 Metal Roof Hook



9 Metal Roof Hook



8 Metal Roof Hook



7 End Clamp

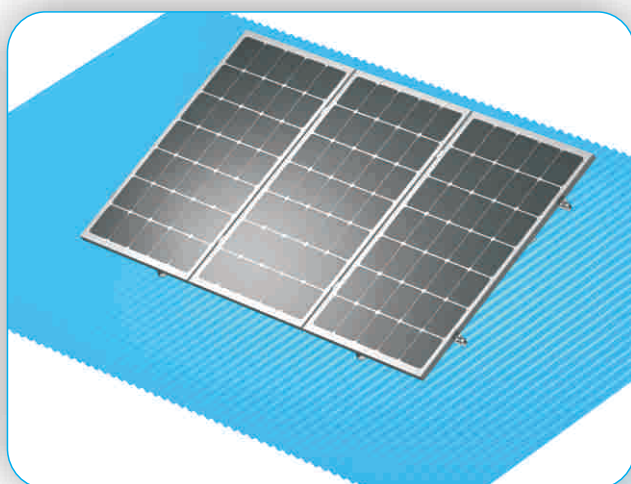


6 Mid Clamp



5 Metal Roof Hook

## Huge Flat Roof Triangle Mounting



### Introduction

The HUGE Triangle Flat Roof has been developed as a universal PV module mounting system for flat top or ground installations. The angle can be adjusted by 10-15°, 15-30°, 30-60°. The innovative aluminum base rails, the special modules, Triangle kit, and the high degree of pre-assembly eliminate the need for onsite cutting welding and enables quick and easy field PV module installations.

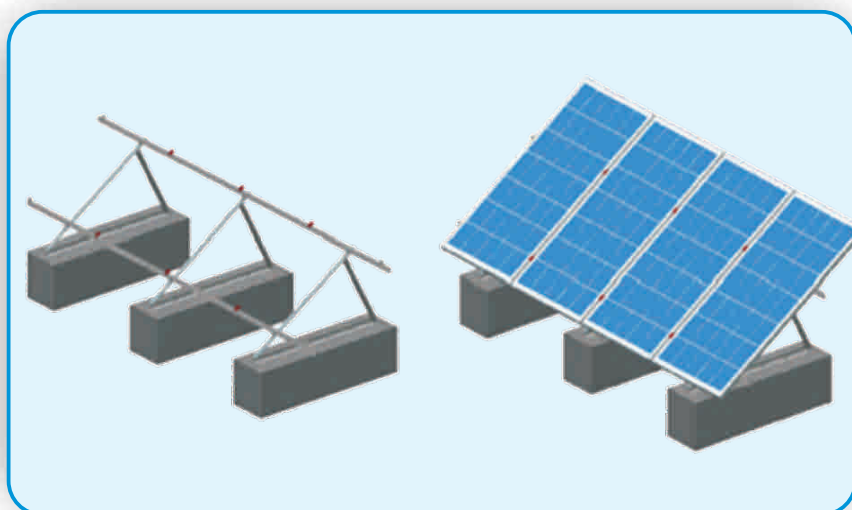
### Technical Parameters

Item	Illustration
Installation site	roof
Snow Load	Up to 1.5KN/m <sup>2</sup>
Module orientation	Portrait or landscape
Angle	0-60 degree
Ground clearance	300mm-3000mm
Aplicable module	Framed and frameless
Wind load	Up to 60m/s
Color	Nature

### Benefits

- 1.Material:Al 6005-T5,with surface anodized treatment, high corrosion resistance.
- 2.Installation:Components pre-assembled in advance before package.Modules are easy to install together.It will save you labour cost and installation time.
- 3.Certificate:AS/NZS 1170.2-2002,SGS report and other international standards.
- 4.Warranty:10 years warranty and 20 years product service life .

## Huge Flat Roof Triangle Mounting



### Mounting Components

No.	Part No.	Description	Material
1-4	HE-ATK	Adjustable Triangle Tilt Kit	Anodized AL6005-T5
5	HE-R-2#	2# Rail	Anodized AL6005-T5
6	HE-LC-05	L Connector	Anodized AL6005-T5
7	HE-EC	End Clamp	Anodized AL6005-T5
8	HE-MC	Mid Clamp	Anodized AL6005-T5



6. L Connector



7. End Clamp



8. Mid Clamp



1-4. Adjustable Triangle Tilt Kit



5. 2# Rail



9. Fixed Triangle Racking System

## Hugergy's ballast mounting system



### Introduction

Hugergy's ballast mounting system has been developed as a universal PV module mounting system for flat top or ground installations. The innovative aluminum base rails, the special modules, Triangle kit, and the high degree of pre-assembly eliminate the need for onsite cutting welding and enables quick and easy field PV module installations.

### Technical Parameters

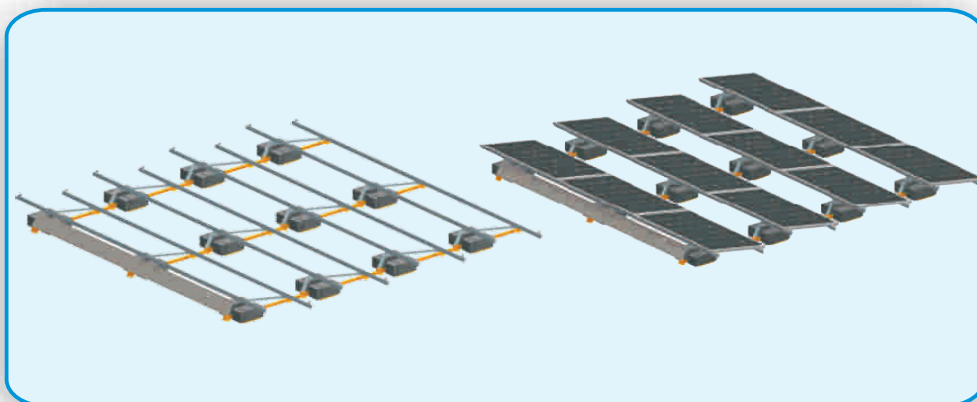
Item	Illustration
Installation site	roof
Snow Load	Up to 1.5KN/m <sup>2</sup>
Module orientation	Portrait or landscape
Angle	0-60 degree
Ground clearance	300mm-3000mm
Aplicable module	Framed and frameless
Wind load	Up to 60m/s
Color	Nature

### Benefits

1. Material: Al 6005-T5, with surface anodized treatment, high corrosion resistance.
2. Installation: Components pre-assembled in advance before package. Modules are easy to install together. It will save you labour cost and installation time.
3. Certificate: AS/NZS 1170.2-2002, SGS report and other international standards.
4. Warranty: 10 years warranty and 20 years product service life.



## Flat Roof Ballast Mounting System



### Mounting Components

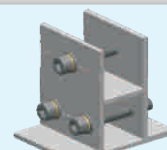
No	Part No	Description	Material
1	HE-R-2#	2# Rail	Anodized AL6005-T5
2	HE-RS-01	Rail Splice Kit	Anodized AL6005-T5
3	HE-BFB	Foot Base	Anodized AL6005-T5
4	HE-BFC	Foot Connector	Anodized AL6005-T5
5	HE-BBL	Back Leg	Anodized AL6005-T5
6	HE-BST	Support Tube	Anodized AL6005-T5
7	HE-BLC	Rail Clamp	Anodized AL6005-T5
8	HE-BP	Block Plate	Anodized AL6005-T5
9	HE-BWB	Wind Baffle	Anodized AL6005-T5
10	HE-MC	Mid Clamp	Anodized AL6005-T5
11	HE-EC	End Clamp	Anodized AL6005-T5



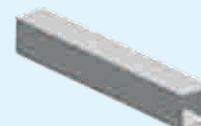
1. 2# Rail



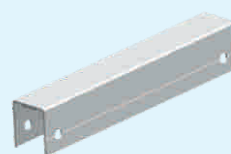
2. Rail Splice Kit



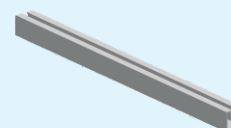
3. Foot Base



4. Foot Connector



5. Back Leg



6. Support Tube



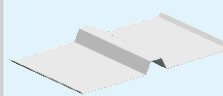
11. End Clamp



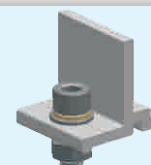
10. Mid Clamp



9. Wind Baffle

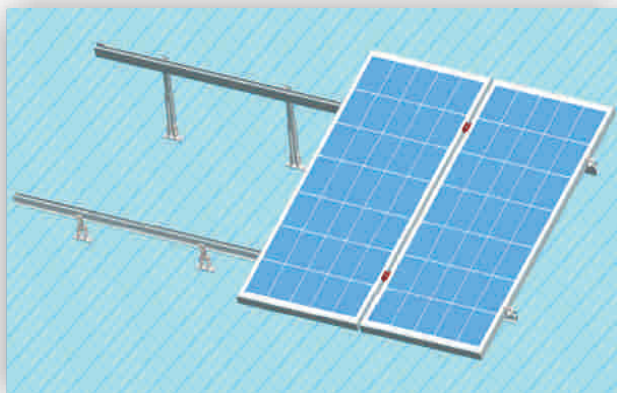


8. Block Plate



7. Rail Clamp

## Huge Metal Roof Mounting\_Adjustable Kit



### Introduction

The Huge Metal Roof Mounting is engineered for the maximum flexibility possible in designing and planning for the commercial and residential roof solar system. It is applicable to install the usual framed module. The special extruded aluminum rail, special module, clamp kit and the various roof hooks can be highly pre-assembled and make the installation easy and quick to save your labor cost and time. The customized length can eliminate the weld and cut onsite to keep the high anticorrosive performance, the structure strength and the appearance.

### Technical Parameters

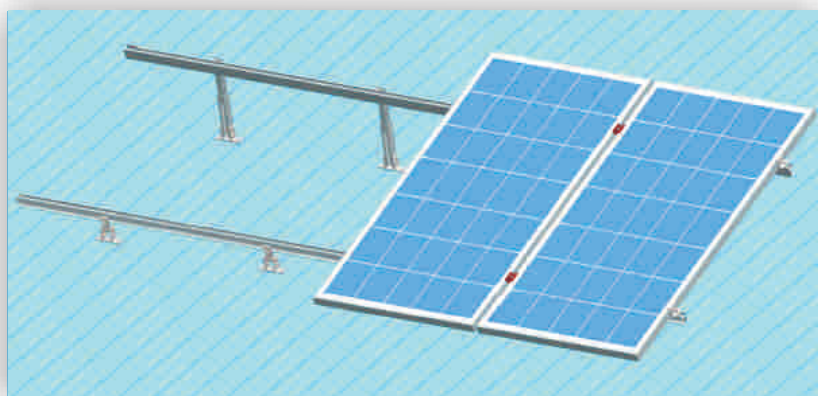
Item	Illustration
Installation site	roof
Snow Load	Up to 1.5KN/m <sup>2</sup>
Module orientation	Portrait or landscape
Angle	0-60 degree
Ground clearance	300mm-3000mm
Aplicable module	Framed and frameless
Wind load	Up to 60m/s
Color	Nature

### Benefits

- 1.Material:Al 6005-T5,with surface anodized treatment, high corrosion resistance.
- 2.Installation:Components pre-assembled in advance before package.Modules are easy to install together.It will save you labour cost and installation time.
- 3.Certificate:AS/NZS 1170.2-2002,SGS report and other international standards.
- 4.Warranty:10 years warranty and 20 years product service life .



## Huge Metal Roof Mounting\_Adjustable Kit



### Mounting Components

No	Part No	Description	Material
1	HE-R-2#	2# Rail	Anodized AL6005-T5
2	HE-RS-01	Rail Splice Kit	Anodized AL6005-T5
3	HE-AFL	Adjustable Roof Front Leg	Anodized AL6005-T5
4	HE-ABL	Adjustable Roof Back Leg	Anodized AL6005-T5
5	HE-MC	Mid Clamp	Anodized AL6005-T5
6	HE-EC	End Clamp	Anodized AL6005-T5



1. 2# Rail



2. Rail Splice Kit



3. Adjustable Roof Front Leg



6. End Clamp

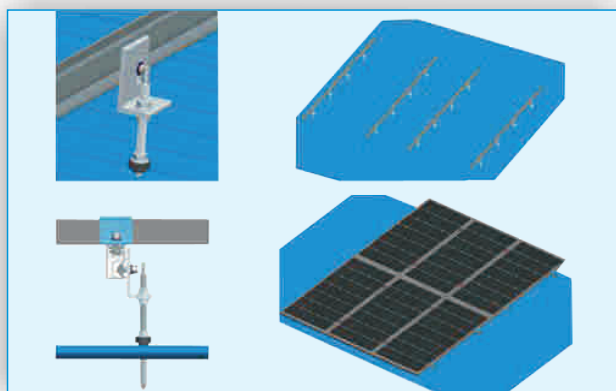


5. Mid Clamp



4. Adjustable Roof Back Leg

## Huge Metal Roof Mounting\_Hanger Bolt



### Introduction

The Huge Metal Roof Mounting is engineered for the maximum flexibility possible in designing and planning for the commercial and residential roof solar system. It is applicable to install the usual framed module. The special extruded aluminum rail, special module, clamp kit and the various roof hooks can be highly pre-assembled and make the installation easy and quick to save your labor cost and time. The customized length can eliminate the weld and cut onsite to keep the high anticorrosive performance, the structure strength and the appearance.

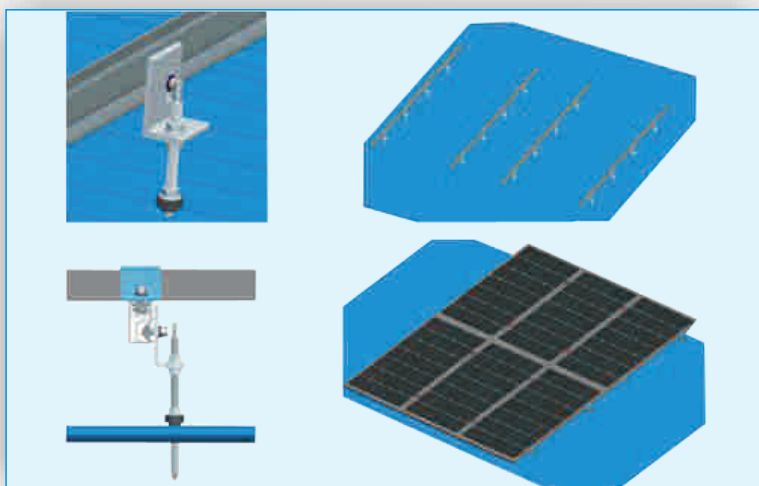
### Technical Parameters

Item	Illustration
Installation site	roof
Snow Load	Up to 1.5KN/m <sup>2</sup>
Module orientation	Portrait or landscape
Angle	0-60 degree
Ground clearance	300mm-3000mm
Aplicable module	Framed and frameless
Wind load	Up to 60m/s
Color	Nature

### Benefits

- 1.Material:Al 6005-T5,with surface anodized treatment, high corrosion resistance.
- 2.Installation:Components pre-assembled in advance before package.Modules are easy to install together.It will save you labour cost and installation time.
- 3.Certificate:AS/NZS 1170.2-2002,SGS report and other international standards.
- 4.Warranty:10 years warranty and 20 years product service life .

## Huge Metal Roof Mounting\_Hanger Bolt



### Mounting Components

No	Part No	Description	Material
1	HE-R-2#	2# Rail	Anodized AL6005-T5
2	HE-RS-01	Rail Splice Kit	Anodized AL6005-T5
3	HE-TH-04A	"Huge Hanger Bolt Hook (M10*200mm)"	Anodized AL6005 T5
4	HE-MC	Mid Clamp	Anodized AL6005-T5
5	HE-EC	End Clamp	Anodized AL6005-T5



1. 2# Rail



2. Rail Splice Kit



5. End Clamp

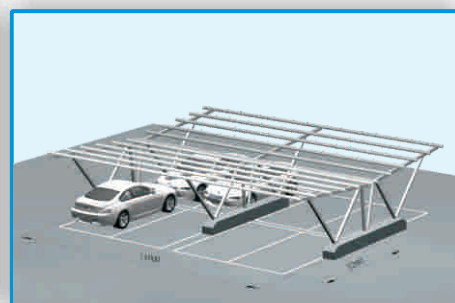
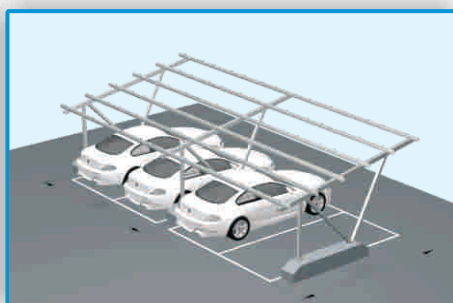
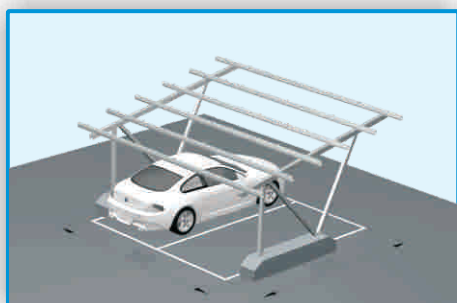
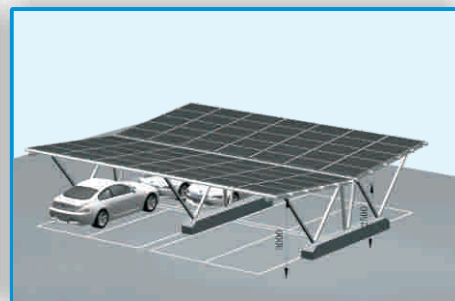
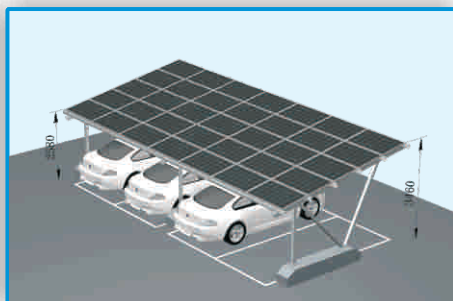


4. Mid Clamp



3. Huge Hanger Bolt

## Solar Carport Mounting System-concrete Foundation



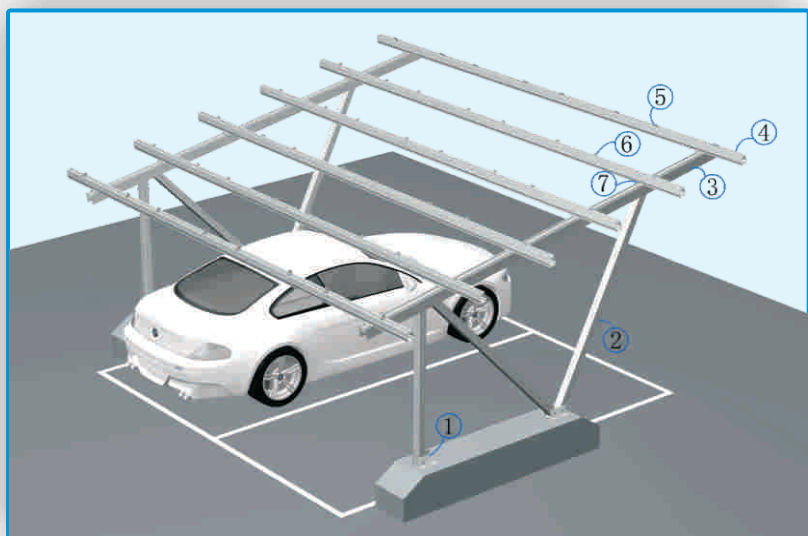
2 cars:about 33m<sup>2</sup>

4 cars:about 57m<sup>2</sup>

8 cars:about 106m<sup>2</sup>

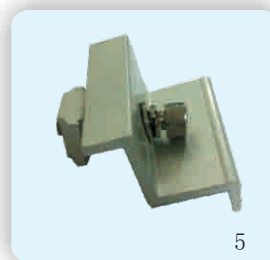
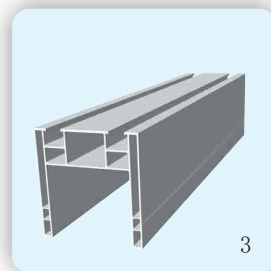
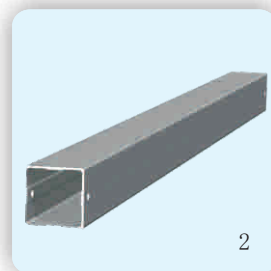
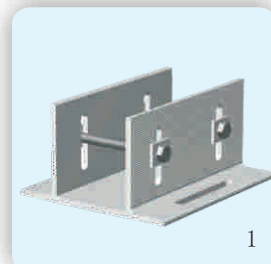
Technical Parameters		Benefits
Item	Illustration	Efficient use of space: enable the efficient use of land resource&space
installation site	the spacious plac commercial park	
snow load	1. 5KN/m <sup>2</sup>	
module orientation	portrait or landscape	Reduce the cost:according to the construction situation,pre-assemble the items before packing.Simplify the installation,to reduce the labour cost.
installation angle	0°~20°	
ground clearance	about 2. 5m	Reliable mechanical validation:Huge pass the AS/NZS 1170.2-2002 and SGS test.The stable test is according to the general standard.
applicable module	frame and frameless	
Wind load	60m/s	The longest resistant duration:all the items use Al 6005-T5, the anodized surface treatment make highly anti-corrosion
color	nature	

## Solar Carport Mounting System-concrete Foundation



### Mounting Components

No	Part No	Description	Material
1	HE-AB-C	Base	Anodized AL6005-T5
2	HE-AFL-C	Base Tube	Anodized AL6005-T5
3	HE-CSP	Support Beam	Anodized AL6005-T5
4	HE-CLR	Lateral orbital	Anodized AL6005-T5
5	HE-UECII	Mid Clamp	Anodized AL6005-T5
6	HE-UMCII	End Clamp	Anodized AL6005-T5
7	HE-RCP	Clamp	Anodized AL6005-T5



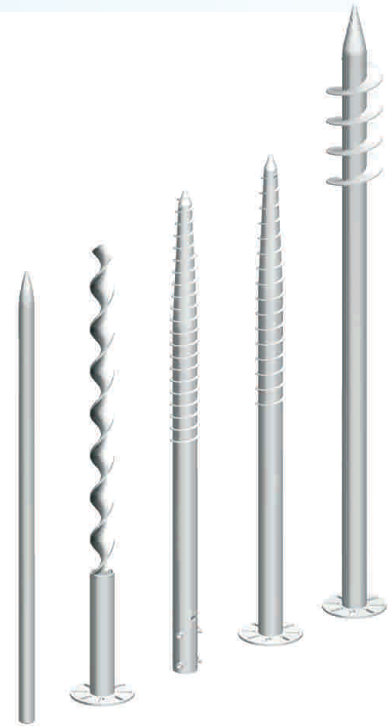
## Ground Screw



- ◆ Hot dip galvanized surface treatment, ensure the product anti-rust property, durability. The average thickness of galvanized layer is 80-100um
- ◆ Place an order according to customer's requirement. Pile into the ground directly, execute construction in slope ground and paddy field.
- ◆ Widely used in solar power system, outdoor bill-boards, temporary exhibition.
- ◆ Multiple flange: choose most suitable flange according to racking system.
- ◆ Supply OEM service: offer OEM processing service for plenty racking companies.
- ◆ Delivery time: 10-15 days.
- ◆ Package: 150 pieces/pallet (can not laminated); 60-80 pieces/pallet (laminated).



## Ground Screw



### Hot dip galvanized process for ground screw

- 1、 Oil removing: using heated hydrochloric acid to remove product surface oil, then wash by water for neutralization.
- 2、 Using hydrochloric acid to remove rust and Hydrogenated membrane, then wash by water for neutralization.
- 3、 Pretreatment: choose Zinc chloride ammonium to accelerate drying, benefit for galvanization.
- 4、 Hot galvanization: heaten the pure zinc solution with concertration of 98. 5% to 450 degree.
- 5、 Refregeration: cool by water or air, prepare grinding and subsequent processing.

### Benefits

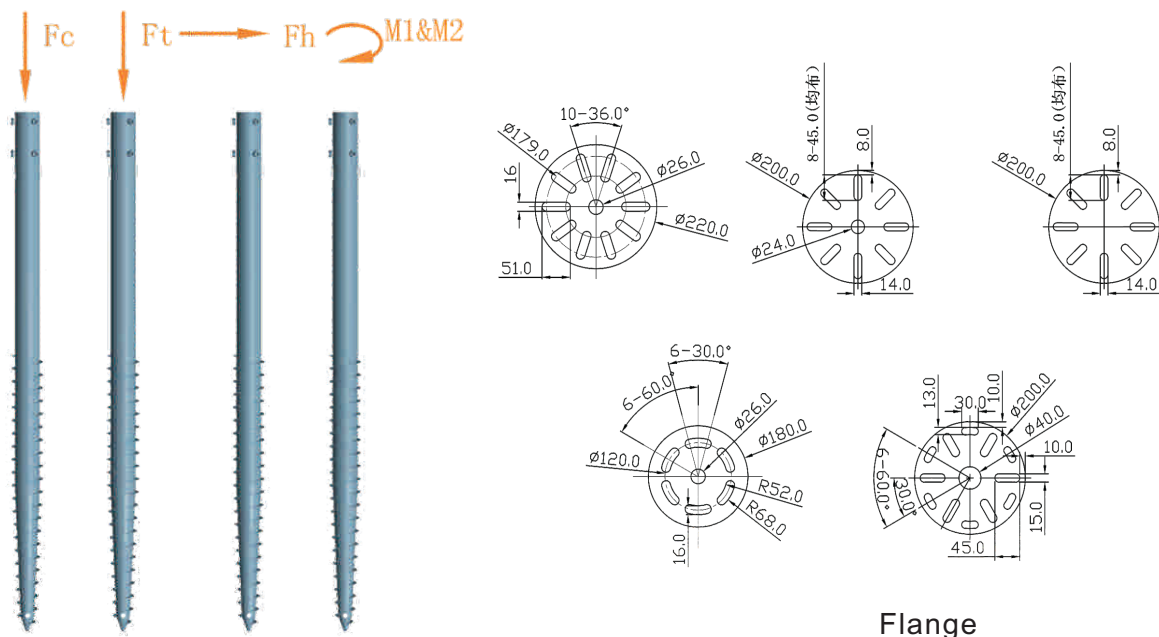
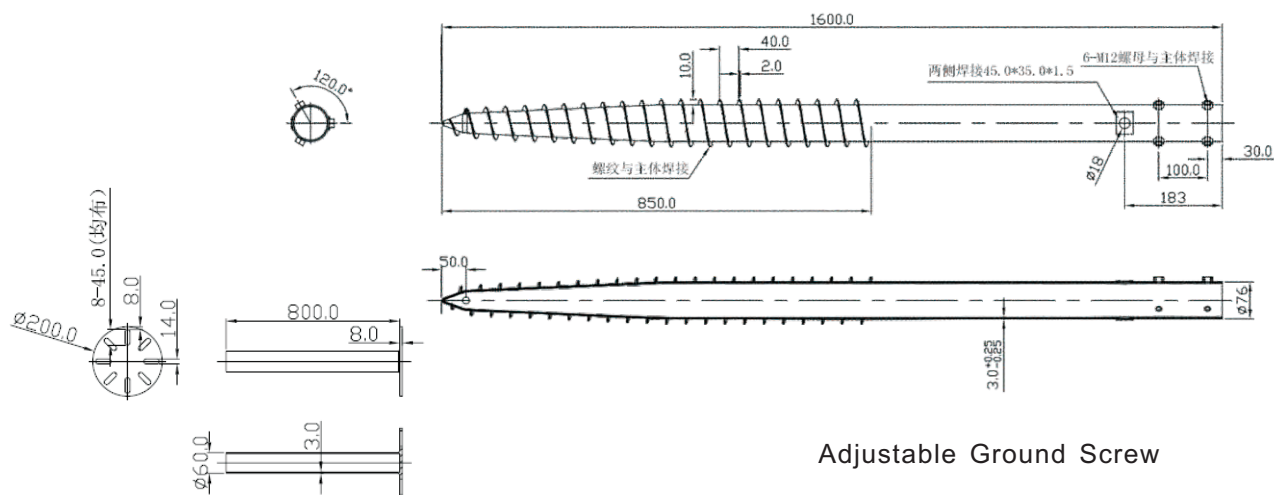
- 1、 Comprehensive protection: fully protect the ground screw by hot galvanization.
- 2、 Reliable: according to JISC8955, the galvanized thickness is HXZ35, antirust period is anticipated.
- 3、 Quality guarantee: strictly inspect and test the hole position, galvanized thickness.

### Installation

- 1、 Manual pile driver for ground screw.  
The pile driver is simple operation, cost is applicable for field operation.
- 2、 Automatic Pile Driver for Ground Screw.  
The Pile driver is very fast to pile ground screw, needing about 30~75 seconds per piece. It is applicable for field operation.

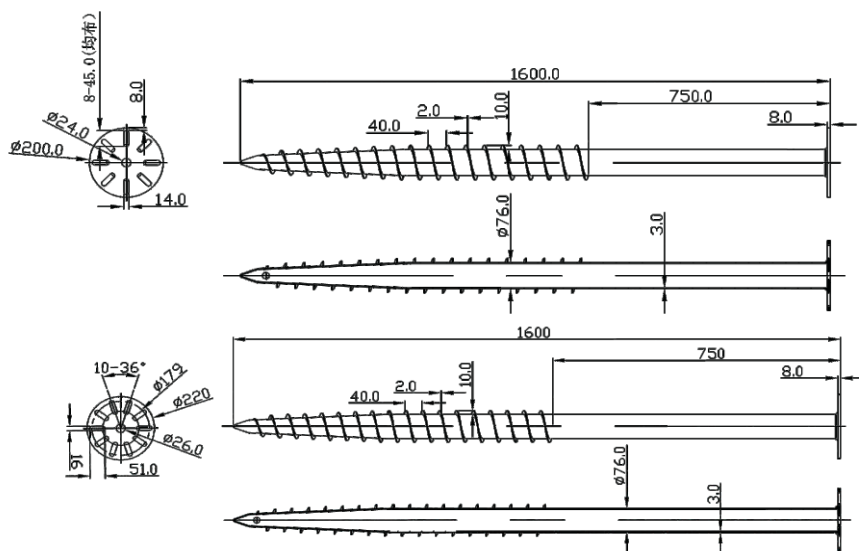


## Ground Screw



Part No.	Inner Diameter mm	Thickness mm	M1 KN*m	M2 KN*m	Fc KN	Ft KN	Fh KN
10-761230	76	3.0	3.386	2.846	25.00	12.50	5.50
10-761630	76	3.0	3.386	4.398	35.00	21.50	8.50

## Ground Screw



Length 1600 ( Hot Sale)

### Instructions of Ground Screw

Length 1600mm Outer Diameter 76mm

### Hot-dip Galvanized

Hot-dip galvanized treatment applies with National Standard GB

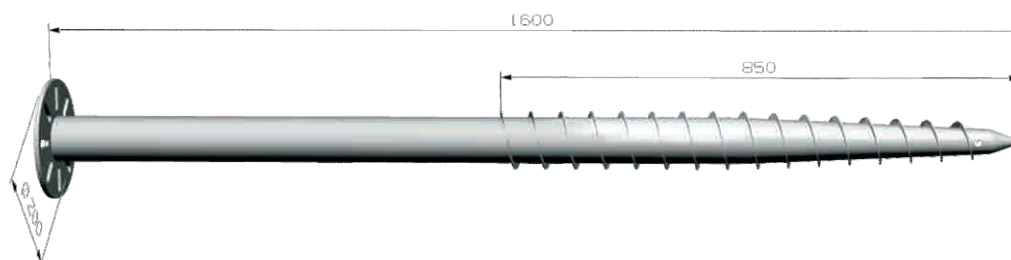
### Installation Notes

Check the installation notes as below

Be cautious when installing rocks and stones place.

Avoid rocks when installing the ground screw, avoid the construction when the pile driver could not drive into the ground and it needs more time to install if deviating from the piling location.

## Ground Screw

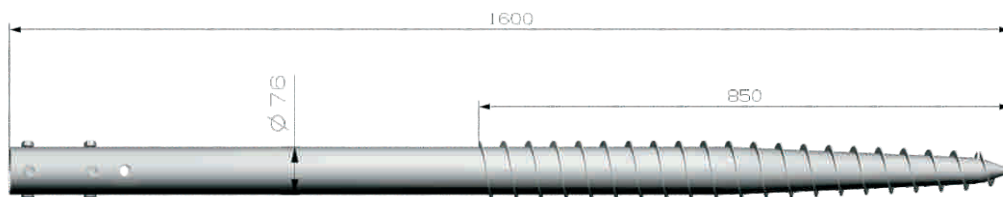


Thickness 3. 1-4. 0mm ground screw			
Part No.	Specification	Customized Design Service	Material
10-761230-C	T3*Φ76*1200mm	provide the ground screw as per installation geological condition following customers' required length, diameter, thickness, thickness of thread, shape of flange and size.	Hot-dip Galvanized Steel Q235
10-761630-C	T3*Φ76*1600mm		
10-763030-C	T3*Φ76*3000mm		



Thickness 3. 1-4. 0mm ground screw			
Part No.	Specification	Customized Design Service	Material
10-761230-B	T3*Φ76*1200mm	provide the ground screw as per installation geological condition following customers' required length, diameter, thickness, thickness of thread, shape of flange and size.	Hot-dip Galvanized Steel Q235
10-761630-B	T3*Φ76*1600mm		
10-763030-B	T3*Φ76*3000mm		

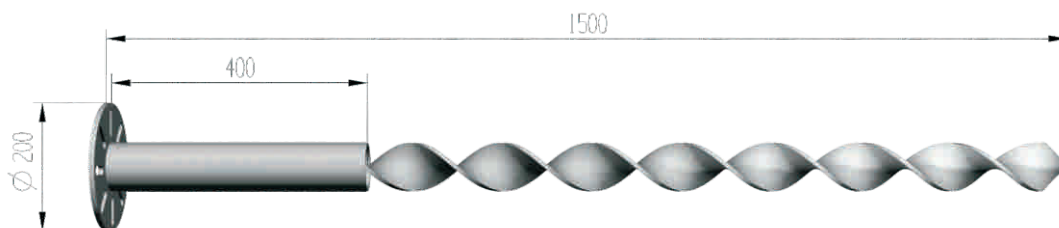
## Ground Screw



Thickness 3.0-4.0mm			
Part No.	Specification	Customized Design Service	Material
10-761230	T3* $\Phi$ 76*1200mm	provide the ground screw as per installation geological condition following customers' required length, diameter, thickness, thickness of thread, shape of flange and size.	Hot-dip Galvanized Steel Q235
10-761630	T3* $\Phi$ 76*1600mm		
10-763030	T3* $\Phi$ 76*3000mm		



Thickness 3.0-4.0mm Ground Screw without Thread			
Part No.	Specification	Customized Design Service	Material
10-W481230	T3* $\Phi$ 48*1200mm	provide the ground screw as per installation geological condition following customers' required length, diameter, thickness, thickness of thread, shape of flange and size.	Hot-dip Galvanized Steel Q235
10-W481530	T3* $\Phi$ 48*1500mm		
10-W483030	T3* $\Phi$ 48*3000mm		



Thickness 8.0mm Ground Screw with Flange			
Part No.	Specification	Customized Design Service	Material
10-S761280	T8* $\Phi$ 76*1200mm	provide the ground screw as per installation geological condition following customers' required length, diameter, thickness, thickness of thread, shape of flange and size.	Hot-dip Galvanized Steel Q235
10-S761680	T8* $\Phi$ 76*1600mm		
10-S7630380	T8* $\Phi$ 76*3000mm		