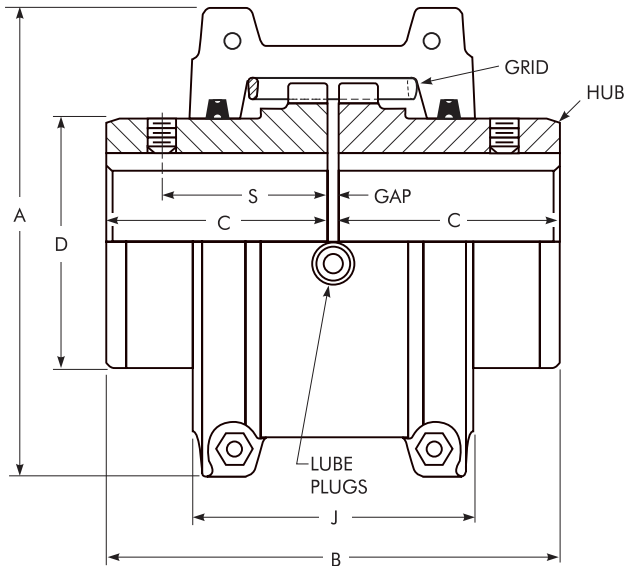
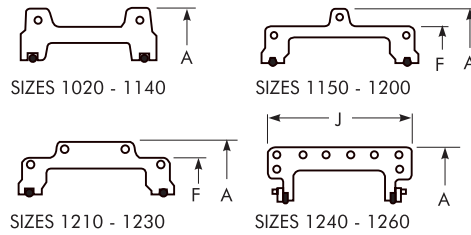


# Type T10

Close Coupled/Dimensions — Inches



COVER PROFILES – HORIZONTAL SPLIT



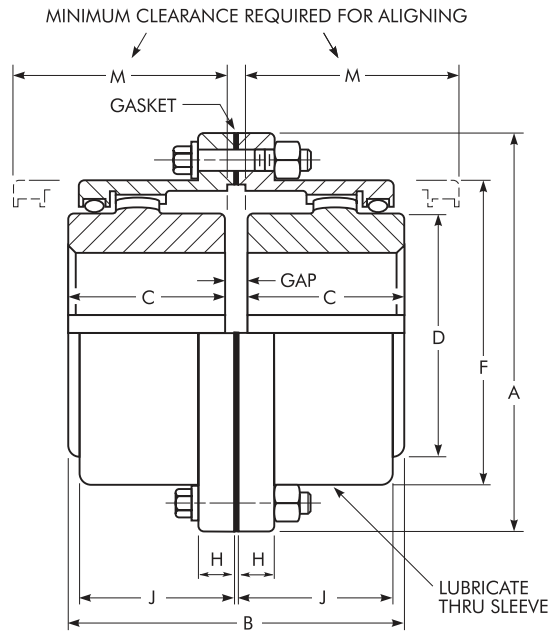
Sizes 1020 thru 1230T10 covers are cast aluminum alloy; Sizes 1240 thru 1260T10 are fabricated steel.

SIZE ★	Torque Rating (lb-in) †	Allow Speed rpm ‡	Max Bore ●	Min Bore ■	Cplg Wt With No Bore-lb	Lube Wt lb	DIMENSIONS — INCHES							
							A	B	C	D	F	J	S	Gap
1020T	460	4500	1.125	.500	4.2	.06	3.82	3.88	1.88	1.56	....	2.62	1.54	.125
1030T	1,320	4500	1.375	.500	5.7	.09	4.16	3.88	1.88	1.94	....	2.69	1.54	.125
1040T	2,200	4500	1.625	.500	7.4	.12	4.50	4.12	2.00	2.25	....	2.75	1.58	.125
1050T	3,850	4500	1.875	.500	12	.15	5.32	4.88	2.38	2.62	....	3.19	1.76	.125
1060T	6,050	4350	2.125	.750	16	.19	5.82	5.12	2.50	3.00	....	3.68	2.06	.125
1070T	8,800	4125	2.500	.750	23	.25	6.25	6.12	3.00	3.44	....	3.81	2.12	.125
1080T	18,150	3600	3.000	1.062	39	.38	7.50	7.12	3.50	4.12	....	4.55	2.54	.125
1090T	33,000	3600	3.500	1.062	56	.56	8.31	7.88	3.88	4.88	....	4.81	2.82	.125
1100T	55,550	2440	4.000	1.625	93	.94	9.88	9.69	4.75	5.59	....	6.12	....	.188
1110T	82,500	2250	4.500	1.625	120	1.12	10.62	10.19	5.00	6.31	....	6.36	....	.188
1120T	121,000	2025	5.000	2.375	179	1.62	12.12	12.00	5.88	7.06	....	7.54	....	.250
1130T	176,000	1800	6.000	2.625	266	2.0	13.62	13.00	6.38	8.56	....	7.68	....	.250
1140T	253,000	1650	7.250	2.625	392	2.5	15.12	14.75	7.25	10.00	....	7.92	....	.250
1150T	352,000	1500	8.000	4.250	500	4.3	17.84	14.65	7.20	10.60	15.40	10.69	....	.250
1160T	495,000	1350	9.000	4.750	681	6.2	19.76	15.85	7.80	12.00	17.20	10.96	....	.250
1170T	660,000	1225	10.000	5.250	987	7.7	22.32	17.25	8.50	14.00	19.18	12.10	....	.250
1180T	915,000	1100	11.000	6.000	1365	8.3	24.80	19.05	9.40	15.50	21.84	12.64	....	.250
1190T	1,210,000	1050	12.000	6.000	1710	9.7	26.60	20.65	10.20	17.20	23.93	12.80	....	.250
1200T	1,650,000	900	13.000	7.000	2331	12.4	29.80	22.25	11.00	19.60	26.00	14.00	....	.250
1210T	2,200,000	820	14.000	7.000	3140	23.2	33.25	24.50	12.00	21.00	29.56	17.00	....	.500
1220T	2,970,000	730	15.000	8.000	3935	35.4	36.25	26.10	12.80	22.50	32.37	19.30	....	.500
1230T	3,850,000	680	16.000	8.000	4997	53.0	39.50	27.70	13.60	24.00	35.62	21.50	....	.500
1240T	4,950,000	630	17.000	10.000	6504	74.5	42.80	29.50	14.50	25.50	....	25.50	....	.500
1250T	6,600,000	580	18.500	10.000	8450	110.5	46.50	32.10	15.80	28.00	....	27.50	....	.500
1260T	8,250,000	540	20.000	10.000	10322	148.1	49.64	34.50	17.00	30.00	....	30.00	....	.500

★ Refer to Page 5 for General Information and Reference Notes.

# Type G20 Standard Flanged Sleeve

## Double Engagement/Dimensions — Millimeters



For Sizes 1010G thru 1055G, Type G10 Shrouded Bolts furnished only when specified on order.

SIZE *	Torque Rating (Nm) †	Allow Speed rpm ‡	Max Bore (mm) •	Min Bore (mm) ■	Cplg Wt With No Bore-kg		Lube Wt (kg)	DIMENSIONS — Millimeters								SIZE *	
					G10	G20		A	B	C	D	F	H	J	M		Gap
1010G	1 140	8000	50	13	4,08	4,54	0,0408	115,9	88,9	42,9	68,6	83,8	14,0	38,9	51	3	1010G
1015G	2 350	6500	65	20	7,71	9,07	0,0726	152,4	101,6	49,3	86,4	105,2	19,0	47,8	61	3	1015G
1020G	4 270	5600	78	26	13,6	15,9	0,113	177,8	127,0	62,0	105,2	126,5	19,0	59,4	77	3	1020G
1025G	7 470	5000	98	32	24,9	29,5	0,2127	212,7	158,9	77,0	130,6	154,9	21,8	71,6	92	5	1025G
1030G	12 100	4400	111	39	38,6	43,1	0,363	239,7	187,4	91,2	152,4	180,3	21,8	83,8	107	5	1030G
1035G	18 500	3900	134	51	61,2	68,0	0,544	279,4	218,9	106,4	177,8	211,3	28,4	97,5	130	6	1035G
1040G	30 600	3600	160	64	88,5	97,5	0,907	317,5	247,3	120,6	209,6	245,4	28,4	111,3	145	6	1040G
1045G	42 000	3200	183	77	127	136	1,04	346,1	277,7	134,9	235,0	274,1	28,4	122,9	166	8	1045G
1050G	56 600	2900	200	89	177	191	1,77	388,9	314,3	153,2	254,0	305,8	38,1	140,7	183	8	1050G
1055G	74 000	2650	220	102	238	249	2,22	425,4	344,3	168,1	279,4	334,3	38,1	158,0	204	8	1055G
1060G	90 400	2450	244	115	...	306	3,18	457,2	384,4	188,2	304,8	366,0	25,4	169,2	229	8	1060G
1070G	135 000	2150	289	127	...	485	4,35	527,0	451,5	220,7	355,6	424,9	28,4	195,6	267	10	1070G

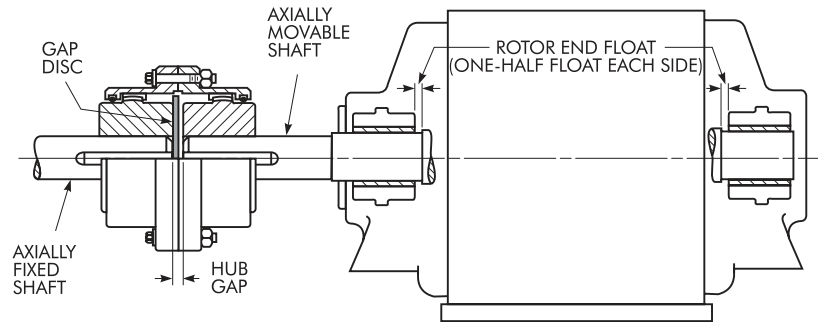
★ See Page 15 for General Information and other Reference Notes.

**TABLE 7 — Limited End Float & Standard Gap Disc Dimensions**

SIZE	DIMENSIONS — Millimeters				
	B	End Float ♦	Gap Disc *		Gap
			Thickness	Dia	
1010G	90,9	2,39	4	75	5
1015G	103,6	2,39	4	94	5
1020G	129,8	2,39	5	114	6
1025G	162,3	2,39	7	141	8
1030G	191,5	2,39	8	165	9
1035G	223,3	4,78	8	192	10
1040G	251,7	4,78	8	227	10
1045G	283,2	4,78	11	253	13
1050G	319,8	4,78	11	278	13
1055G	350,5	4,78	12	305	14
1060G	392,4	4,78	14	333	16
1070G	459,7	4,78	16	384	18

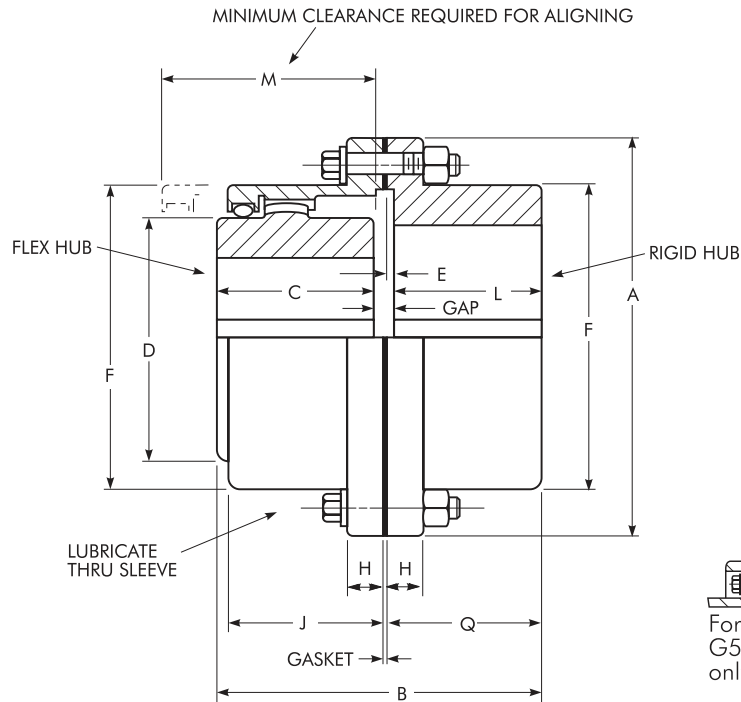
♦ If these values exceed one-half rotor end float or equivalent manufacturer's specification, refer to the Factory.

\* Gap disc material: Neoprene, 70 durometer.



# Type G52 Standard Flanged Sleeve

## Single Engagement/Dimensions — Millimeters



For Sizes 1010G thru 1055G, Type G51 Shrouded Bolts furnished only when specified on order.

SIZE ★	Torque Rating (Nm) †	Allow Speed rpm ‡	Max Bore (mm) •		Min Bore (mm) ■	Cplg Wt With No Bore-kg		Lube Wt (kg)	DIMENSIONS — Millimeters											SIZE ★	
			Flex Hub	Rigid Hub		G51	G52		A	B	C	D	E	F	H	J	L	M	Q		Gap
1010G	1 140	8000	50	65	13	4,08	4,54	0,0227	115,9	86,6	42,9	68,6	2,5	83,8	14,0	38,9	39,6	51	42,2	4	1010G
1015G	2 350	6500	65	80	20	8,16	9,07	0,0408	152,4	99,6	49,3	86,4	2,5	105,2	19,0	47,8	46,2	61	48,8	4	1015G
1020G	4 270	5600	78	98	26	13,6	15,9	0,0680	177,8	124,5	62,0	105,2	2,5	126,5	19,0	59,4	58,4	76	61,0	4	1020G
1025G	7 470	5000	98	118	32	24,9	27,2	0,118	212,7	155,4	77,0	130,6	2,5	154,9	21,8	71,6	73,7	91	76,2	5	1025G
1030G	12 100	4400	111	140	39	38,6	43,1	0,181	239,7	183,9	91,2	152,4	2,5	180,3	21,8	83,8	87,9	107	90,4	5	1030G
1035G	18 500	3900	134	163	51	61,2	68,0	0,272	279,4	214,1	106,4	177,8	2,5	211,3	28,4	97,5	102,1	130	104,6	6	1035G
1040G	30 600	3600	160	196	64	90,7	99,8	0,467	317,5	242,8	120,6	209,6	4,1	245,4	28,4	111,3	115,3	145	119,4	7	1040G
1045G	42 000	3200	183	216	77	129,3	136	0,557	346,1	273,1	134,9	235,0	4,1	274,1	28,4	122,9	130,6	165	134,6	8	1045G
1050G	56 600	2900	200	235	89	181,4	195	0,907	388,9	309,1	153,2	254,0	5,1	305,8	38,1	140,7	147,3	183	152,4	9	1050G
1055G	74 000	2650	220	266	102	251,7	263	1,13	425,4	349,5	168,1	279,4	5,1	334,3	38,1	158,0	172,7	203	177,8	9	1055G
1060G	90 400	2450	244	290	115	...	324	1,70	457,2	385,1	188,2	304,8	6,6	366,0	25,4	169,2	186,4	229	193,0	10	1060G
1070G	135 000	2150	289	340	127	...	508	2,27	527,0	453,6	220,7	355,6	8,4	424,9	28,4	195,6	220,2	267	228,6	13	1070G

★ See Page 15 for General Information and other Reference Notes.