

GEOSPATIAL

# GEOMEDIA<sup>®</sup> SMART CLIENT

Dynamically Jumpstart Your GIS

INTERGRAPH<sup>®</sup>







# GEOMEDIA<sup>®</sup> SMART CLIENT

Is your geographic information system (GIS) at a gridlock, stuck in a department, limited to a few, contained and locked away?

## GET OUT OF THE GRIDLOCK

Today, stakeholders across your organization know the value of geographic information, but often lack the expertise to run a traditional desktop GIS. Online maps delivered by a web GIS are helpful, but these implementations often do not support the flavored geospatial workflows required. Today, users need the power of GIS not as a horizontal technology, but delivered in vertical market focused workflows.

Between those working with a rigid and technically demanding desktop GIS and a static lightweight browser-based GIS; there exists a large potential user base. These users are eager to geospatially accelerate their business workflows and ignite the power of GIS. This requires a new approach – working outside the passive and limiting departmental deployments of the GIS that have plagued organizations for decades.

## THE SMART GIS

The enterprisewide “smart GIS” obliterates the growing disparity between the status quo and what a GIS needs to be. A smart GIS is the perfect GIS to:

- Connect and equip ALL users with the power of geography
- Break down the walls of legacy that have resulted in closed, passive, and uninspiring one-dimensional systems
- Provide a platform for a smarter world – a digital world where geographic information is the key ingredient to jumpstarting business critical workflows to understand our changing earth

GeoMedia® Smart Client makes your organization progressive, empowering individuals and departments to collectively ignite your dynamic GIS. Geographic changes are easily and interactively implemented across an enterprise-wide smart GIS, seamlessly integrating into customized workflows. You determine these vibrant geospatial business workflows, providing a level of sophistication not supported by legacy out-of-the-box horizontal software products

## DISCOVER THE POWER OF GEOGRAPHY

GeoMedia Smart Client is for those users interested in discovering the power of geography and applying this knowledge to building a smarter world. Your end-users will be able to leverage advanced geospatial functionality via simple-to-use map-based tools, streamlining their processes and honing their expertise to build a smart GIS. Workflow optimization and intuitive web editing will be a reality embraced across your organization.

## BENEFITS

### IMPLEMENT ONCE, USE MANY TIMES

GeoMedia Smart Client meets the needs of multi-disciplinary operations, affordably enabling users in an organization to access and use rich geospatial data in their business processes. This provides a forward-thinking alternative to heavy desktop technology centric products and expensive service providers with one-off, unimaginative (and disconnected) offerings. Instead of building customized workflows for each workgroup within an organization using different vendors and tools, GeoMedia Smart Client unites this technology. With GeoMedia Smart Client, you create a single deployment that can be configured for an unlimited number of applications – making it the perfect GIS for a smarter organization.

### POWER TO THE PEOPLE

Historically, the desktop GIS was intended for the advanced and technical GIS professional. Later, web GIS was created to provide access to individuals requiring static maps with limited portrayals of geography. Consequentially, these two models of deployment have alienated potential users between or outside these personas.

Today, there are a growing number of smart individuals that recognize the power of geographic information and its vitality in driving business decisions. Their unmet demand has been a smart GIS. GeoMedia Smart Client is an inclusive solution that leverages configurable workflows to augment and deliver geospatial tools in ways that meet the needs of these smart users. At GeoMedia Smart Client's core are workflow optimization and web editing capabilities, enabling your organization to develop efficient, customer-specific workflows to empower your smart users. Providing the utmost flexibility, these workflows are sustainable and support ongoing, long-term business processes.

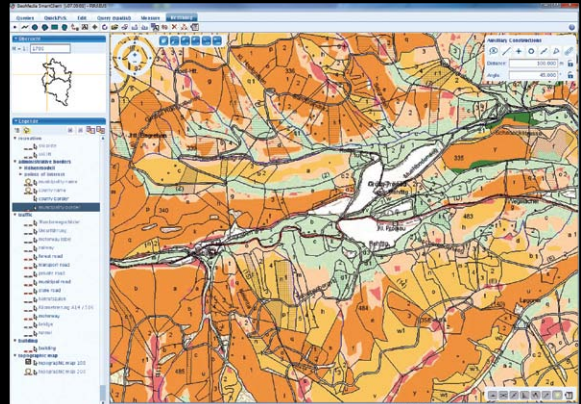
## COMPLETE YOUR GIS WITH A SMART GIS

GeoMedia Smart Client completes your existing desktop GIS by engaging a larger audience with your geospatial assets. Geospatial datasets and maps produced from a desktop GIS feed a Smart GIS with content, while leveraging a web GIS' advantages in delivering light and application specific solutions to more users. With GeoMedia Smart Client, individuals across your organization can create data, maps and reports for their projects, rather than having to rely on a GIS specialist or outsource this work. Advanced geospatial functionality is fused into your core business workflows, enabling a wide audience to capture and edit data, use snapping tools, and perform redlining and geospatial queries. This includes the ability to define workflows that drive the user interface (GUI) which guides users step-by-step and provides a means to collect, update and validate your data. Ultimately this enables non-GIS experts to exploit advanced GIS functionality in a smart way!

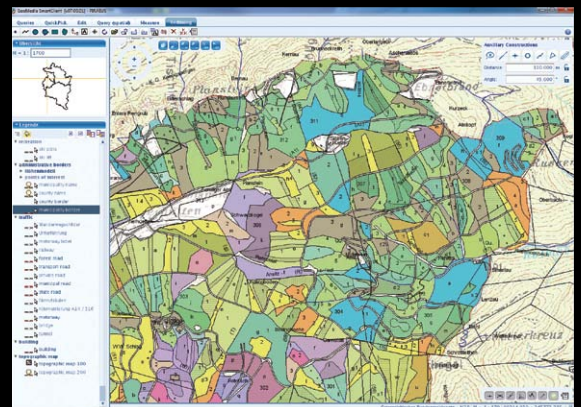
## REDUCES COST AND COMPLEXITY

GeoMedia Smart Client's technology provides a means to remove many of the IT support overheads associated with installing and supporting desktop and browser-based products. A self-configuring and updating "smart client" reduces the cost in buying and maintaining underutilized desktop GIS licenses (and associated hardware). Other savings come from:

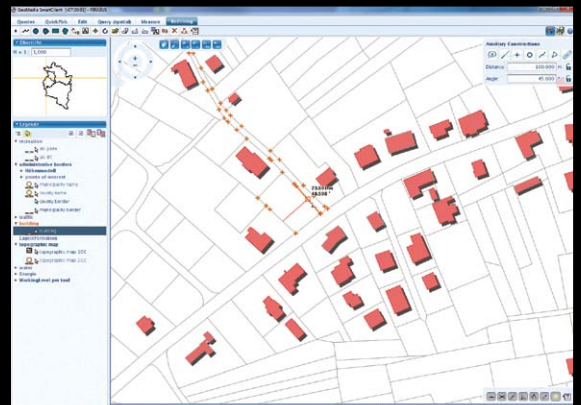
- Tying geospatial into essential business workflows enables the creation of sustainable, on-going processes that satisfy the entire organization
- Using intelligent geospatial data caching provides a huge boost to performance levels in terms of access time, and reduces the volume of data transferred from the server to a minimum
- An easy and intuitive interface reduces training costs



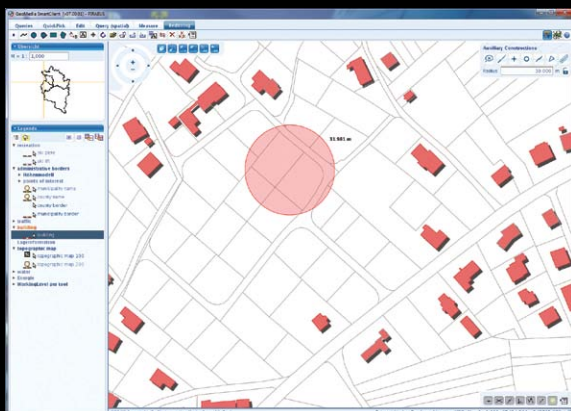
Control and coordinate access to shared data. GeoMedia Smart Client supports the ability to dynamically change the user interface to match user roles or specific workflow steps, across departments and functions.



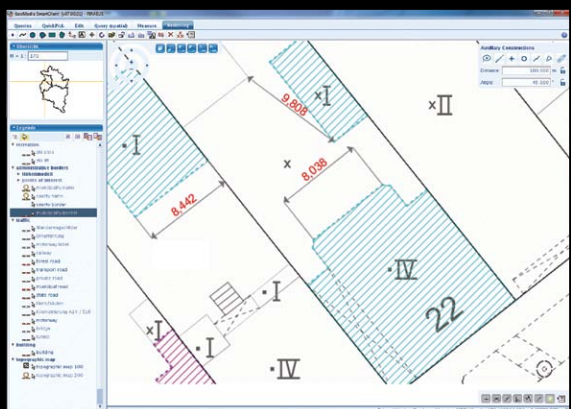
GeoMedia Smart Client supports definition of very complex and scale-dependent styles.



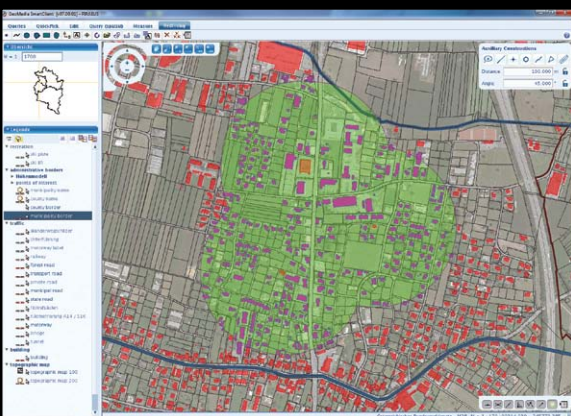
High-end vector functions include smart snapping, enabling snap to start point, end point, vertex, mid-point, orthogonal and intersection when editing.



Redlining enables users to annotate the map and create markups, similar to marking up a paper map with a red pen.



GeoMedia Smart Client supports high-end vector functions such as dimensioning, which depicts specific lengths or distances on a map.



Use of intelligent geospatial data caching enables raster and vector data (i.e., aerial photos, land use plans, etc.) to be cached either on the server in the LAN or on the client.

## COMPLEMENTS OTHER INTERGRAPH GEOSPATIAL PRODUCTS

GeoMedia Smart Client can be used as a stand-alone solution, but is greatly enhanced when used in conjunction with GeoMedia WebMap to provide broader access to various types of data, including web services and on-the-fly coordinate transformation capabilities. Integrating GeoMedia WebMap enables Smart Client to use OGC® web services (WMS, WFS) and expands direct file support by 40 formats. The additional vector data support includes shapefiles, MS Access, MapInfo, DWG, DXF, and DGN; and expanded raster access support includes COT and ECW. GeoMedia Desktop can also be used for the initial setup of the Smart Client project, in lieu of using the Smart Client administration console. With GeoMedia Desktop, you can easily access or add new features, define scale dependencies, register raster and vector data or use other expert functionality.

## CORE FEATURES

### BUSINESS LOGIC AND EFFICIENT WORKFLOWS

At GeoMedia Smart Client's core is a highly configurable rules and workflow engine for implementing life-cycle workflows, feature-level access control, data validation and behavior, and integration to other systems. A simple user interface guides users with task-specific forms and workflows, increasing productivity and data quality. The coordinated access, data models, and lifecycles increase information sharing and re-use. This avoids the inefficiencies, errors, and risks that usually come with different functions working on their own silos of data.

## HIGH-END GEOSPATIAL FUNCTIONALITY

GeoMedia Smart Client fuses geospatial into your core business workflows, and supports advanced geospatial functionality such as capturing and editing data, snapping tools, redlining and also high-end geospatial query. Process experts can pre-define report, form and plot layouts so that non-GIS experts simply key in this information. Vector data support includes read/write from Oracle and SQL Server 2008 databases, both using supporting spatial extensions.

## INTELLIGENT CACHING

Use of intelligent geospatial data caching for raster and vector data enables selected graphical data (i.e., aerial photos, land use plans, etc.) to be cached either on the server, in the LAN, or on the client. Smart Client can then read this data directly from the cache, taking the load of the map servers and network. This provides a huge boost to performance levels. The client caches are kept current through a fully automated processing timestamps, without requiring user intervention.

## SIMPLE DEPLOYMENT AND MANAGEMENT

Based on standard Java Web Start technology, GeoMedia Smart Client is self-configuring. This provides a high-performance client platform compatible with most major operating systems (Windows®, LINUX, Mac, etc.) without depending on third-party products or the administrative issues that arise from browser versions and settings or operating system compatibilities. GeoMedia Smart Client communication between the client and application servers is entirely based on Web services using Simple Object Access Protocol (SOAP).

## PRODUCTS

GeoMedia Smart Client is available in three product tiers to complement a broad range of customers – from a small business with few users doing simple vector-editing, to large, multi-disciplinary environments supporting multiple business workflows across various departments.

### GEOMEDIA SMART CLIENT ESSENTIALS

Organizations can provide high-end vector redlining functionality plus support for an unlimited number of users to display raster and vector maps, analyze and query data, print, and utilize measurement and dimensioning functions. Vector database support includes direct capability to read ORACLE and Microsoft SQL Server 2008, and raster format support includes TIFF, GeoTIFF, JPG, PNG for raster data. Advanced client and server geo-caching is provided for both raster and vector data, ensuring high performance, even in a disconnected mode.

### GEOMEDIA SMART CLIENT ADVANTAGE

The additional Workflow Manager – Runtime module enables customers to utilize predefined business process workflows, edit attributes or capture and change spatial data on the web client, and push changes back to the server database (ORACLE or SQL Server 2008).

### GEOMEDIA SMART CLIENT PROFESSIONAL

For those customers that want to define their own workflows or modify existing ones, this tier of GeoMedia Smart Client includes Workflow Manager – Editor. This enables an organization to develop its own workflows or revise the structure, process, and forms of current ones.



[www.intergraph.com/geospatial](http://www.intergraph.com/geospatial)

Intergraph, the Intergraph logo, and GeoMedia are registered trademarks of Intergraph Corporation. Microsoft is a registered trademark of Microsoft Corporation. Other brands and product names are trademarks of their respective owners. Intergraph believes the information in this publication is accurate as of its publication date. Such information is subject to change without notice.

©2012 Intergraph Corporation 4/12 SGI-US-0048B-ENG